



BREAKFAST
CN LABEL
2025-2026

Base Product Code: 17262000

GTIN: 10016000172620

Description: Blueberry Chex Gluten Free Cereal Single Serve Cup 60/2 OZ



Base Product Code	17262000
GTIN	10016000172620
Case UPC	1600017262
Distributor Name	No Distributor Selected
Distributor Product Code	
Total Shelf Life	403 Days
Min Shelf life upon Arrival	115 Days
Unit Size	2 OZ
Units per Case	60
Case Dimensions	Case Dimensions (in): 16.50 (L) X 12.25 (W) X 18.00 (H)
Gross Case Weight	11.05 LB
Net Case Weight	7.50 LB
Pallet Information	Layer: 9, High: 5, Pal Qty: 45

PRODUCT BREAKDOWN		
Description	UPC	Quantity
BLUEBERRY CHEX CEREAL K12 EQ 2OZ	0016000172623	60

Product Description

The great fruit flavor of blueberry can be enjoyed in gluten-free Blueberry Chex! Dusted with sweet blueberry flavor, this ready-to-eat cereal cup is great for breakfast, lunch, and supper; in the classroom, on-the-go or in the cafeteria. Whole grain rice - first ingredient. Meets 2 ounce equivalent grains, Gluten-free and is CACFP eligible.

Benefits

This top selling flavor meets the specific needs of your K-12 foodservice program. One product that meets 2 grains means only one product for inventory and storage. Ready to eat dry cereal in a convenient, portable cup that has room for milk - no dishes required. Made with no artificial flavors or colors. For USDA Child Nutrition Programs: meets 2 ounce equivalent grains, Gluten-free, and is CACFP eligible.

Storage Instructions

Keep in a cool, dry place



Base Product Code: 17262000

GTIN: 10016000172620

Description: Blueberry Chex Gluten Free Cereal Single Serve Cup 60/2 OZ



Nutrition Facts

Serving Size	1 container (56g)		As Packaged (100g)
Calories	As Packaged 240Kcal		As Packaged 422Kcal
		%DV*	
Total Fat	5g	6%	9g
Saturated Fat	1g	3%	1g
Trans Fat	0g		0g
Cholesterol	0mg	0%	0mg
Sodium	320mg	14%	575mg
Total Carbohydrate	46g	17%	82g
Dietary Fiber	1g	4%	2g
Total Sugars	11g		20g
Incl. Added Sugars	11g	22%	19g
Protein	3g		5g
Vitamin D	5µg	25%	10µg
Calcium	130mg	10%	325mg
Iron	16mg	90%	32mg
Potassium	0mg	0%	163mg

*Percent Daily Value (DV) are based on a 2,000 calorie diet

**Not a significant nutrient source

Preparation

READY_TO_EAT : Ready to eat

Ingredients & Claims

Whole Grain Rice, Rice, Sugar, Canola and/or Sunflower Oil, Salt, Blueberry Powder, Molasses, Natural Flavor, Rosemary Extract, Vitamin E (mixed tocopherols) Added to Preserve Freshness.

Vitamins and Minerals: Tricalcium Phosphate, Iron and Zinc (mineral nutrients), Vitamin C (sodium ascorbate), A B Vitamin (niacinamide), Vitamin B2 (riboflavin), Vitamin B6 (pyridoxine hydrochloride), Vitamin B1 (thiamin mononitrate), Vitamin A (palmitate), A B Vitamin (folic acid), Vitamin B12, Vitamin D3.

Does Not Contain Declaration Obligatory Allergens

Kosher Pareve

Base Product Code: 14885000

GTIN: 10016000148854

Description: Cocoa Puffs Cereal Single Serve Cup 25% Less Sugar 60/2 OZ



Base Product Code	14885000
GTIN	10016000148854
Case UPC	1600014885
Distributor Name	No Distributor Selected
Distributor Product Code	
Total Shelf Life	312 Days
Min Shelf life upon Arrival	120 Days
Unit Size	2 OZ
Units per Case	60
Case Dimensions	Case Dimensions (in): 16.50 (L) X 12.25 (W) X 18.00 (H)
Gross Case Weight	11.05 LB
Net Case Weight	7.50 LB
Pallet Information	Layer: 9, High: 5, Pal Qty: 45

PRODUCT BREAKDOWN		
Description	UPC	Quantity
COCOA PUFFS 25PCT LESS SUGAR K12 2OZ EQ	0016000148857	60

Product Description

Your favorite Cocoa Puffs(TM) taste that meets USDA Smart Snack criteria. Enjoy, the naturally flavored, reduced sugar, frosted corn puff cereal with real cocoa. This ready-to-eat cup provides convenient single serve portion control and room for milk. Whole Grain Corn - first ingredient. Meets 2 ounce equivalent grains and USDA Smart Snack criteria. CACFP eligible.

Benefits

Genuine Cocoa Puffs taste that meets USDA Smart Snack criteria. This cereal is naturally flavored and made with reduced sugar, frosted whole grain corn puff cereal with real cocoa. Cereal comes in a branded, single serve cup that is great for breakfast in the classroom, or as a grab 'n go item. This ready-to-eat cup provides convenient portion control and room for milk. Contains no flavors from artificial sources. Meets 2-ounce equivalent grain standard. One product with double the benefits: less to inventory, less to store, and less to serve. CACFP eligible.

Storage Instructions

Keep in a cool, dry place



Styled



Packaging



Out of Packaging



Open Case

Base Product Code: 14885000

GTIN: 10016000148854

Description: Cocoa Puffs Cereal Single Serve Cup 25% Less Sugar 60/2 OZ



Nutrition Facts

Serving Size	1 Container (56g)		(100g)
Calories	As Packaged 220kcal		As Packaged 384kcal
		%DV*	
Total Fat	3g	4%	5g
Saturated Fat	0g	0%	1g
Trans Fat	0g		0g
Cholesterol	0mg	0%	0mg
Sodium	230mg	10%	417mg
Total Carbohydrate	47g	17%	83g
Dietary Fiber	3g	12%	6g
Total Sugars	12g		21g
Incl. Added Sugars	12g	24%	20g
Protein	3g		7g
Vitamin D	6µg	30%	10µg
Calcium	200mg	15%	360mg
Iron	6mg	30%	10mg
Potassium	190mg	4%	347mg

*Percent Daily Value (DV) are based on a 2,000 calorie diet

**Not a significant nutrient source

Preparation

READY_TO_EAT : Ready to eat

Ingredients & Claims

Whole Grain Corn, Sugar, Rice Flour, Corn Syrup, Cocoa Processed With Alkali, Color (caramel color and annatto extract), Canola and/or Sunflower Oil, Salt, Baking Soda, Natural Flavor.

Vitamins and Minerals: Tricalcium Phosphate, Calcium Carbonate, Vitamin C (sodium ascorbate), Iron and Zinc (mineral nutrients), A B Vitamin (niacinamide), Vitamin B6 (pyridoxine hydrochloride), Vitamin B1 (thiamin mononitrate), Vitamin A (palmitate), Vitamin B2 (riboflavin), A B Vitamin (folic acid), Vitamin B12, Vitamin D3.

MAY CONTAIN WHEAT INGREDIENTS.

Kosher Pareve

Base Product Code: 14886000

GTIN: 10016000148861

Description: Cinnamon Toast Crunch Cereal Single Serve Cup 25% Less Sugar 60/2 OZ



Base Product Code	14886000
GTIN	10016000148861
Case UPC	1600014886
Distributor Name	No Distributor Selected
Distributor Product Code	
Total Shelf Life	312 Days
Min Shelf life upon Arrival	120 Days
Unit Size	2 OZ
Units per Case	60
Case Dimensions	Case Dimensions (in): 16.50 (L) X 12.25 (W) X 18.00 (H)
Gross Case Weight	11.05 LB
Net Case Weight	7.50 LB
Pallet Information	Layer: 9, High: 5, Pal Qty: 45

PRODUCT BREAKDOWN		
Description	UPC	Quantity
GMI CINN TST CRNCH CEREAL RS CUP 2OZ	0016000148864	60

Product Description

Your favorite Cinnamon Toast Crunch(TM) taste with 25% less sugar in a convenient single serve portion. Enjoy the reduced sugar crisp, whole wheat, rice cereal sweetened with real cinnamon. Whole Grain Wheat—first ingredient. Contains no artificial flavors and no colors from artificial sources. This ready-to-eat cup provides convenient portion control and room for milk. Meets 2 ounce equivalent grain standard, USDA Smart Snack criteria and is CACFP eligible.

Benefits

Fun favorite Cinnamon Toast Crunch taste with 25% less sugar. Made with reduced sugar crisp, whole wheat, rice cereal sweetened with real cinnamon. This top selling flavor and reduced sugar option help meet the specific needs of your K-12 foodservice program. Cup has room for milk—no dishes required. Meets 2 ounce equivalent grains, USDA Smart Snack criteria, and is CACFP eligible. Recommended for K-12, colleges and universities, and lodging settings. Contains no artificial flavors and no colors from artificial sources.

Storage Instructions

Keep in a cool dry place



Styled



Styled



Packaging



Out of Packaging



Case



Open Case

Base Product Code: 14886000

GTIN: 10016000148861

Description: Cinnamon Toast Crunch Cereal Single Serve Cup 25% Less Sugar 60/2 OZ



Nutrition Facts

Serving Size	1 container (56g) As Packaged		(100g) As Packaged
Calories	210kcal		379kcal
		%DV*	
Total Fat	6g	7%	10g
Saturated Fat	1g	3%	1g
Trans Fat	0g		0g
Cholesterol	0mg	0%	0mg
Sodium	320mg	14%	571mg
Total Carbohydrate	44g	16%	78g
Dietary Fiber	7g	25%	13g
Total Sugars	11g		20g
Incl. Added Sugars	11g	21%	19g
Protein	3g		5g
Vitamin D		25%	10µg
Calcium		10%	232mg
Iron		25%	9mg
Potassium		2%	189mg

*Percent Daily Value (DV) are based on a 2,000 calorie diet

**Not a significant nutrient source

Preparation

READY_TO_EAT : Ready to eat

Ingredients & Claims

Whole Grain Wheat, Sugar, Rice Flour, Polydextrose, Canola and/or Sunflower Oil, Maltodextrin, Dextrose, Salt, Cinnamon, Trisodium Phosphate, Soy Lecithin, Rosemary Extract, BHT Added to Preserve Freshness.

Vitamins and Minerals: Calcium Carbonate, Vitamin C (sodium ascorbate), Iron and Zinc (mineral nutrients), A B Vitamin (niacinamide), Vitamin B6 (pyridoxine hydrochloride), Vitamin B1 (thiamin mononitrate), Vitamin A (palmitate), Vitamin B2 (riboflavin), A B Vitamin (folic acid), Vitamin B12, Vitamin D3.

CONTAINS WHEAT AND SOY INGREDIENTS.

Kosher Dairy

Base Product Code: 22489000

GTIN: 10016000224893

Description: Lucky Charms Gluten Free Cereal 25% Less Sugar Single Serve Cup 60/2 oz



Base Product Code	22489000
GTIN	10016000224893
Case UPC	1600022489
Distributor Name	No Distributor Selected
Distributor Product Code	
Total Shelf Life	312 Days
Min Shelf life upon Arrival	120 Days
Unit Size	2 OZ
Units per Case	60
Case Dimensions	Case Dimensions (in): 16.50 (L) X 12.25 (W) X 23.00 (H)
Gross Case Weight	12.00 LB
Net Case Weight	7.50 LB
Pallet Information	Layer: 9, High: 4, Pal Qty: 36

PRODUCT BREAKDOWN		
Description	UPC	Quantity
LUCKY CHARMS 25 LESS SUGAR K12 2OZ EQ	0016000224896	60

Product Description

Frosted and toasted whole grain, gluten-free cereal with marshmallow pieces. It comes in a ready-to-eat cup for convenient, single serve portion control. CACFP eligible and meets 2 ounce equivalent grain criteria. Perfect for K-12 meal programs. Each case contains 60 units of 2 oz cups.

Benefits

Frosted and toasted whole grain, gluten-free cereal with marshmallow pieces. It comes in a ready-to-eat cup for convenient, single serve portion control. CACFP eligible and meets 2 ounce equivalent grain criteria. Perfect for K-12 meal programs. Each case contains 60 units of 2 oz cups.

Storage Instructions

Keep in a cool, dry place



Base Product Code: 22489000

GTIN: 10016000224893

Description: Lucky Charms Gluten Free Cereal 25% Less Sugar Single Serve Cup 60/2 oz



Nutrition Facts

Serving Size	1 container (56g)		(100g)
Calories	As Packaged 210kcal		As Packaged 376kcal
		%DV*	
Total Fat	3g	3%	5g
Saturated Fat	1g	3%	1g
Trans Fat	0g		0g
Cholesterol	0mg	0%	0mg
Sodium	440mg	19%	789mg
Total Carbohydrate	45g	16%	80g
Dietary Fiber	5g	16%	8g
Total Sugars	12g		21g
Incl. Added Sugars	12g	23%	20g
Protein	5g		9g
Vitamin D	6µg	30%	11µg
Calcium	200mg	15%	320mg
Iron	6mg	30%	10mg
Potassium	150mg	4%	269mg

*Percent Daily Value (DV) are based on a 2,000 calorie diet

**Not a significant nutrient source

Preparation

READY_TO_EAT : Ready to eat

Ingredients & Claims

Whole Grain Oats, Sugar, Whole Grain Corn, Corn Starch, Corn Syrup. Contains 2% or less of: Dextrose, Modified Corn Starch, Salt, Trisodium Phosphate, Gelatin, Red 40, Yellow 5& 6, Blue 1, Natural and Artificial Flavor, Vitamin E (mixed tocopherols) Added to Preserve Freshness, Vitamins and Minerals: Calcium Carbonate, Vitamin C (sodium ascorbate), Iron and Zinc (mineral nutrients), A B Vitamin (niacinamide), Vitamin B6 (pyridoxine hydrochloride), Vitamin B, (thiamin mononitrate), Vitamin A (palmitate), Vitamin B2 (riboflavin), A B Vitamin (folic acid), Vitamin B12, Vitamin D3.

Does Not Contain Declaration Obligatory Allergens

READI-BAKE Benefit®

10073321404021 - RB Benefit Bars BAN CHC CK 2.5/48

Give kids all the benefits of great-tasting 51% Whole Grain Readi-Bake® Benefit® Bars. Keep kids going with two wholesome servings of grains packed with fiber and protein. These delicious chewy bars are an ideal solution for any day part providing various breads and grains under The Child Nutrition Program.



MARKETING

Made with 51% whole grains. Good source of iron. Contains at least 3 grams of Fiber. Thaw and serve convenience. Frozen shelf life: 18 Months, refrigerated: 6 weeks, ambient: 1 week

Nutrition Facts

48 Servings per container

Serving Size 1 bar

Amount Per Serving
Calories **280**

% Daily Value*

Total Fat 8 g **10%**

Saturated Fat 3 g **15%**

Trans Fat 0 g

Cholesterol 15 mg **5%**

Sodium 220 mg **10%**

Total Carbohydrates 47 g **17%**

Dietary Fiber 3 g **11%**

Total Sugars 23 g

Includes 21 g Added Sugars **42%**

Protein 5 g

Vitamin D 0 mg 0%

Calcium 40 mg 4%

Iron 1.8 mg 32%

Potassium 150 mg 4%

* The % Daily Values (DV) tells you how much a nutrient in a serving of food contributes to a daily diet. 2,000 calories a day is used for general nutrition advice.

PRODUCT SPECIFICATIONS

Code		GTIN		Pack Description		
40402		10073321404021		case of 48		
Brand		Brand Owner		GPC Description		
READI-BAKE Benefit®		J&J SNACK FOODS CORP.		Biscuits/Cookies (Frozen)		
Gross Weight	Net Weight	Case/Catch Weight	Country Of Origin	Kosher	Child Nutrition	
9 LBR	7.5 LBR	No	United States	Yes	Yes	
Shipping						
Length	Width	Height	Volume	TlxHl	Shelf Life	Storage Temp From/To
12.69 INH	7.31 INH	9.13 INH	0.49 FTQ	20x7	540 Days	-30 FAN / 0 FAN
Traceability Regulation						
Regulation Type Code	Regulatory Act	Trade Item Regulation Compliant	Regulation Restrictions and Descriptors			
BUY_AMERICAN_ACT	N/A	TRUE	NOT_COVERED_BY_FTL			

HANDLING SUGGESTIONS

Keep Frozen (0° F or below). Shelf life up to eighteen months when unopened and stored properly. When thawed at ambient temperature, shelf life is one week. When stored in refrigerated temperature, shelf life is 6 weeks.

ALLERGENS

C = Contains; MC = May Contain; N = Free From; UN = Undeclared; S = Free From Not Traced; S# = Derived from ingredient; #N = Not Derived from ingredient; All = Not All

- Milk - C
- Eggs - C
- Soybean - C
- Wheat - C
- Sesame - N
- Peanuts - N
- Tree - N
- Fish - N
- Shellfish - N
- Crustaceans - N

INGREDIENTS

WHOLE WHEAT FLOUR, SUGAR, ENRICHED WHEAT FLOUR (WHEAT FLOUR, NIACIN, REDUCED IRON, THIAMINE MONONITRATE, RIBOFLAVIN, FOLIC ACID), OATS, CHOCOLATE CHUNKS (SUGAR, CHOCOLATE LIQUOR, COCOA BUTTER, DEXTROSE, SOY LECITHIN, VANILLA), EGGS, WATER, SOYBEAN OIL, INVERT SUGAR, BANANA PUREE (BANANAS, CITRIC ACID, ASCORBIC ACID), CANOLA OIL, MOLASSES, CONTAINS 2% OR LESS OF THE FOLLOWING: NATURAL FLAVOR, WHEY, BAKING SODA, BAKING POWDER (SODIUM ACID PYROPHOSPHATE, SODIUM BICARBONATE, CORN STARCH, MONOCALCIUM PHOSPHATE), INULIN, SALT, XANTHAN GUM, SPICE. CONTAINS EGG, MILK, SOY, WHEAT.

READI-BAKE BeneFIT®

10073321404021 - RB BeneFit Bars BAN CHC CK 2.5/48



Give kids all the benefits of great-tasting 51% Whole Grain Read-Bake® BeneFIT® Bars. Keep kids going with two wholesome servings of grains packed with fiber and protein. These delicious chewy bars are an ideal solution for any day part providing various breads and grains under The Child Nutrition Program.

PREPARATION & COOKING SUGGESTIONS

Thaw and serve.

SERVING SUGGESTIONS

Thaw and serve.

MORE INFORMATION

Got a question or some feedback for us? We're always happy to talk. Local: 856.665.9533

MORE IMAGES





Individually wrapped Cinnamon Toast Crunch cereal bars offer convenient, low-mess on-the-go snacking. Each bar features cereal pieces with no artificial flavors, and no high fructose corn syrup. Made without gelatin. Ideal for quick school breakfasts. Each case includes 96 bars, 1.42 oz each. Perfectly sized for portion control.



Product Information:

PRODUCT CODE:	45576000
UPC:	16000455764
GTIN:	10016000455761
UNIT SIZE:	1.42
CASE COUNT:	96
ATTRIBUTES:	No Artificial Flavors 1 oz. Eq. Grain Whole Grain No Gelatin Smart Snacks Compliant No High Fructose Corn Syrup

Ingredients & Allergens

Whole Grain Oats, Corn Syrup, Whole Wheat, Sugar, Fructose, Rice Flour, Canola and/or Sunflower Oil, Whole Wheat Flour, Brown Rice Flour. Contains 2% or less of: Vegetable Glycerin, Calcium Carbonate, Whole Corn Flour, Wheat Starch, Chicory Root Extract, Salt, Maltodextrin, Dextrose, Color (caramel color, annatto extract), Soy Lecithin, Cinnamon, Trisodium Phosphate, Baking Soda, Iron and Zinc (mineral nutrients), Natural Flavor, A B Vitamin (niacinamide), Vitamin B6 (pyridoxine hydrochloride), Vitamin B2 (riboflavin), A B Vitamin (folic acid).

CONTAINS WHEAT AND SOY INGREDIENTS.

Preparation Instructions

Ready to eat

Package Information:

NET WEIGHT:	N/A
VOLUME:	0.8 CF
HEIGHT:	6.4
LENGTH:	17.9

WIDTH:	96
CASE SIZE:	12.3

Nutrition Facts

Serving Size	1 bar (40g)	100 g (100g)
Calories	As Packaged 150	As Packaged 370
	% DV	
Total Fat	2g 3%	6g
Saturated Fat	0g -	1g
Trans Fat	0g	0g
Cholesterol	0mg -	0mg
Sodium	135mg 6%	337mg
Total Carbohydrate	30g 11%	76g
Dietary Fiber	2g 8%	6g
Total Sugars	9g -	22g
Incl. Added Sugars	8g 17%	21g
Protein	2g	6g
Vitamin D	0µg -	0µg
Calcium	220mg 15%	561mg
Iron	2mg 10%	5mg
Potassium	0mg -	175mg
Vitamin A	0µg -	0µg
Vitamin C	0mg -	0mg
Thiamin	0mg 6%	0mg
Riboflavin	0mg 6%	0mg
Niacin	1mg 6%	2mg
Vitamin B6	0mg 8%	0mg
Folate	30µg 8%	80µg
Folic Acid	15µg -	38µg
Vitamin B12	0µg -	0µg
Zinc	1mg 8%	3mg
Water	-	9g
Ash	-	3g

* The % Daily Value (DV) tells you how much a nutrient in a serving of food contributes to a daily diet. 2,000 calories a day is used for general nutrition advice.

* Nutritional information is subject to change. See product label to verify ingredients and allergens.

Chia Oatmeal Strawberry Bar 2.50 oz.



SINCE 1965
San Antonio, Texas
20-698-8997



Nutrition Facts	
1 serving per container	
Serving size 2.50 oz (71g)	
Amount Per Serving	% Daily Value*
Calories 230	
Total Fat 3.5g	4%
Saturated Fat 1g	8%
Trans Fat 0g	
Cholesterol 10mg	3%
Sodium 120mg	9%
Total Carbohydrate 45g	18%
Dietary Fiber 3g	11%
Total Sugars 24g	
Includes 22g Added Sugars	44%
Protein 4g	
Vitamin D 0.1mcg	0%
Calcium 20mg	2%
Iron 1.4mg	8%
Potassium 60mg	2%

*The % Daily Value (DV) tells you how much a nutrient in a serving of food contributes to a daily diet. 2,000 calories a day is used as general nutrition advice.

Contains: Milk, Egg, Wheat

INGREDIENTS: Chia Oatmeal Crust: whole grain oats, whole wheat flour, enriched bleached flour (wheat flour, malted barley flour, niacin, reduced iron, thiamin mononitrate, riboflavin, folic acid), water, sweet potato (sweet potatoes, water, sugar), vegetable shortening, cane sugar, brown sugar, eggs, raisin paste, white chia seeds, sweet whey (milk), vegetable oil, salt, butter emulsion (water, cottonseed oil, natural and artificial flavors, tragacanth gum, citric acid, sodium benzoate (as a preservative), vitamin e (d-alpha tocopherol)), vanilla flavor (water, high fructose corn syrup, natural and artificial flavor, citric acid, caramel color, sodium benzoate and potassium sorbate (preservatives)), leavening (sodium bicarbonate, sodium aluminum phosphate, monocalcium phosphate), baking soda, potassium sorbate (preservative). Strawberry Filling: sugar, water, strawberries, modified food starch. Contains less than 2% of: citric acid, cellulose gel, cellulose gum, color added [fruit and vegetable juice, turmeric], natural flavor, potassium sorbate (preservative).

UPC Code	Product Number	Unit Weight/Pack	Smart Snack	Grain Bread
763028-03175-2	17	2.50 oz./100 pk.	✓	2

Net Case Weight	Case Dimensions (L*W*H)	Case Cube	Pallet Configuration	Cases/Pallet
15.63 lbs.	17*13*9	1.15	8 TIE by 7 HIGH	56

Instructions/Preparation: (1) Thaw to room temperature or pull day before & store in cooler.

(2) Oven heat 200F for 3 minutes or steam table heat.

Note: Product can be warmed in package.

Finished product is produced in a nut-free facility.

Order Code
CHIA25-IW



I CERTIFY THAT EACH SERVING OF Lux product contains the bread serving and the fruit/vegetable based on the grams/cup required to meet USDA guidelines. Mark Alvarez

Lux Bakery, Inc. 1734 Centennial Blvd., Suite 106 San Antonio, Texas 78211 Phone: 210-698-8997 Fax: 210-698-8385 Email: orders@lux-bakery.com Website: luxbakery.com

Mark Alvarez

1/02/2024





Sandwich, Croissant, WG, Chicken Sausage & Cheese, IW (#4607)

Nutrition Facts

Serving size 1 sandwich 2.90oz (82g)

Amount per serving

Calories 210

% Daily Value*

Total Fat 11g	14%
Saturated Fat 4g	20%
Trans Fat 0g	
Cholesterol 30mg	10%
Sodium 390mg	15%
Total Carbohydrate 18g	7%
Dietary Fiber 2g	7%
Total Sugars 3g	
Includes 2g Added Sugars	4%
Protein 13g	
Vitamin D 0mcg	0%
Calcium 122mg	10%
Iron 0.9mg	4%
Potassium 230mg	4%

* The % Daily Value (DV) tells you how much a nutrient in a serving of food contributes to a daily diet. 2,000 calories a day is used for general nutrition advice.

Hungry yet? Our Chicken Sausage & American Cheese Croissant Sandwich will take care of that! It's the perfect way to start your day and comes individually wrapped for convenience.

General Specifications

Pack: 100/2.9 oz
Servings per Case: 100
Kosher: No
Shelf Life: None at ambient. 1 days refrigerated. 365 days frozen.
Status: Available



SCHOOL SPECIFICATIONS

CACFP Compliant: Yes
Nutritional Ratio: 47-17-4

Meat/Meat Alternate (ounce equivalents):
1.5 [Download Statement](#)
Grain (ounce equivalents): 1.0 [Download Statement](#)
Whole Grain: 56%

INGREDIENTS

Bread: WHOLE WHEAT FLOUR, WATER, ENRICHED FLOUR (UNBLEACHED WHEAT FLOUR, MALTED BARLEY FLOUR, NIACIN, REDUCED IRON, THIAMINE MONONITRATE, RIBOFLAVIN, FOLIC ACID), MARGARINE (PALM OIL, WATER, SOYBEAN OIL, SUGAR, SOYBEAN LECITHIN (SOY), MONO-DIGLYCERIDES, POTASSIUM SORBATE, CITRIC ACID, NATURAL FLAVOR, BETA CAROTENE (COLOR), VITAMIN A PALMITATE), SUGAR, CONTAINS 2% OR LESS OF EACH OF THE FOLLOWING: CALCIUM PROPIONATE, CORN STARCH, HONEY, YEAST, MALT EXTRACT, DRIED MILK, SALT, DRY CULTURED WHEAT FLOUR, SWEET WHEY, ENZYME, Chicken Sausage: CHICKEN, WATER, SEASONING (SALT, SPICES, DEXTROSE, SUGAR), Cheese: CULTURED SKIM MILK AND MILK, WATER, SODIUM CITRATE, SALT, POTASSIUM CITRATE ANNATTO AND PAPRIKA (COLOR), CREAM, ENZYMES, VITAMIN A PALMITATE, SORBIC ACID (PRESERVATIVE), SOY LECITHIN (ANTI-STICKING AGENT).

ALLERGENS & DISCLOSURES

Contains milk, soy, and wheat ingredients. This product is processed in a facility that produces products with eggs.
Contains bioengineered food ingredients.
This product is produced in a nut-free and sesame-free facility.

Instructions

PREPARATION

Preferred method:

Thaw under refrigeration overnight.

FROM THAWED: Heat product at 350 degrees F for 10-12 minutes.

FROM FROZEN: Heat product at 350 degrees F for 18-20 minutes.

Product is in ovenable film, it is not necessary to remove from film before heating

Case Specifications

GTIN: 00737410046075

Dimensions: 19.875" x 15.75" x 9.375"

Cube: 1.7

Gross Weight: 19.93 lb

Net Weight: 18.12 lb

Per Pallet: 48

Tier x Height: 6 x 8

Inside Pack: 100 pieces per case

CASE LABEL



[Download the case label PDF.](#) Cases may be marked with on-case inkjetting or labels with some variance from the example.

Bid Specification

Bake Crafters Sandwich, Croissant, WG, Chicken Sausage & Cheese, IW; must be whole grain rich and provide 1.0 ounce grain equivalent and 1.5 ounces of meat or meat alternate. Portion to provide at least 185 calories, with no more than 12 grams of fat. Must contain less than 440 milligrams of sodium. Acceptable brand: Bake Crafters 4607.

3x5 Whole Wheat Breakfast Flatbread (Eggs, Sausage, Bacon & Cheese Sauce) 80WBF



Pack Size: 80/2.47oz. portions per case

Child Nutrition Information: 096712 - One 2.47oz. 3x5 Whole Wheat Breakfast Flatbread provides 1.00oz. equivalent meat/meat alternate and 1.00oz. equivalent grains for the Child Nutrition Meal Pattern Requirements.

Ingredients: CRUST: Water, Whole Wheat Flour, Enriched Flour (Malted Barley Flour, Niacin, Reduced Iron, Thiamine Mononitrate, Riboflavin, Folic Acid), Soybean Oil, Contains 2% or less of: Vital Wheat Gluten, Sugar, Salt, Yeast. CHEESE: Low Moisture-Part Skim Mozzarella Cheese (Pasteurized Part Skim Milk, Cultures, Salt, Enzymes). EGG: Whole Eggs, Skim Milk, Soybean Oil, Corn Starch, Salt, Xanthan Gum, Citric Acid. SAUCE: Modified Food Starch, Whey, Non-Dairy Creamer (Corn Syrup Solids, Coconut Oil, Dipotassium Phosphate, Sodium Caseinate, Titanium Dioxide, Silicon Dioxide (Flow Agent), Mono and Diglycerides, Turmeric and Annatto Extracts, Artificial Flavor), Cheddar Cheese Powder [Cheddar Cheese (Pasteurized Milk, Cheese Cultures, Salt, Enzymes), Whey], Salt, Natural Flavor, Turmeric, Romano Cheese (Cow's Milk, Salt, Cheese, Cultures, Enzymes), Whole Milk Powder, Lactic Acid, Carrageenan, Annatto, Silicon Dioxide (Prevents Caking). SAUSAGE: Ground Pork, (No More Than 30% Fat), Water, Spices, Salt, Dextrose, Garlic Powder. BACON: Bacon Cured with: Water, Salt, Smoke Flavoring, Sodium Phosphate, Sodium Erythorbate, Sodium Nitrite. May Contain Sugar, Brown Sugar.

Allergens: Wheat, Egg and Milk. May Contain Soy.
Nardone Bros. is a peanut and tree nut-free facility.

Cooking Instructions:

For a softer crust: Preheat oven to 325 F. Place pizza directly on center oven rack. Cook for 7 to 10 minutes or until cheese is melted and crust edges are golden brown.

For a crispy crust: Preheat oven to 325 F. Place pizza on a baking sheet. Cook for 8 to 11 minutes or until cheese is melted and crust edges are golden brown.

Nutrition Facts

Servings Per Portion 1
Serving Size 2.47 oz

Amount Per Serving

Calories 168

	% Daily Value*
Total Fat 8 g	13%
Saturated Fat 4 g	20%
Trans Fat 0 g	0
Cholesterol 66 mg	19%
Sodium 322 mg	13%
Total carbohydrate 13 g	4%
Dietary Fiber 1 g	5%
Sugars 3 g	0
Includes 0g Added Sugars	0
Protein 9 g	0
Vitamin D 0 mcg	0%
Calcium 66 mg	9%
Iron 1 mg	6%
Potassium 22 mg	0%

* The % Daily Value (DV) tells you how much a nutrient in a serving of food contributes to a daily diet. 2,000 calories a day is used for general nutrition advice.

Shipping Info:

Net Weight: 12.35 lbs.
Gross Weight: 14.35 lbs.
Pieces/case: 80
UPC: 8554113416
GTIN: 00085541134162
Dimensions: 17 ¾ x 10 ¾ x 9 ¾
Cube: 1.08
Ti/Hi: 9/7
Shelf Life: 180 days frozen
Country of Origin: 100% U.S.

Contains: Pork



420 New Commerce Blvd. • Wilkes-Barre, PA 18706
1-800-823-5320

All product information is believed to be truthful and accurate.

Last Updated: 6/17/2019 *Savate Walsh*

Sunny Fresh® EGGS OVERLY EASY

10080-100007730

Liquid Whole Egg

WITH CITRIC ACID, CARTON



Product Description

Made from premium whole eggs for the ultimate in goodness, it's ideal for omelets, pancakes, French toast and savory scrambled eggs that cook up tender, fluffy and golden.

Product Attributes

B **F** **X** No high fructose corn syrup, artificial colors and artificial flavors.

Nutritionals – CN Equivalency

Each 1.00 oz. serving of frozen egg product provides 1.00 oz. equivalent meat alternate for the Child Nutrition Meal Pattern Requirements.

Heating Instructions

	THAW	PREP	HEAT	SERVE
WATER BATH METHOD	No thawing required.	<ul style="list-style-type: none"> Use pot or steam kettle large enough for bags to float. Fill vessel 3/4 full with water. Heat to simmer. 	<ul style="list-style-type: none"> Immerse bags in water, adjust heat to maintain low simmer (180°-190°F). Stir water and bags of eggs occasionally (~every 5 min.). Remove bags from vessel when cooked to desired texture. Knead bags vigorously to break up the cooked mass. 	<ul style="list-style-type: none"> Store unopened bags in pans covered without heat (will stay hot up to 1.5 hrs). Caution - additional cooking takes place when held. To serve, slit bags.
STEAMER OVEN	<ul style="list-style-type: none"> Quick Thaw: place under cold running water. Unpacked Thaw: Remove bags and place in refrigerator for 24-48 hours. Case Thaw: Place case in refrigerator for 5-7 days. 	<ul style="list-style-type: none"> In Bag: place unopened bag in perforated hotel pan. Poured liquid: empty bag or carton of liquid egg into prepared pan; cover with film wrap. 	<ul style="list-style-type: none"> Place steamer in cabinet. Steam heat 30 minutes. 	<ul style="list-style-type: none"> Carefully remove tray from steam cabinet; Bag: shake bag. Poured liquid: stir slightly to break up egg. Repeat shaking/stirring step to redistribute liquid until fully cooked. Return to open steamer until fully cooked.

INGREDIENT STATEMENT:

Whole Eggs, Citric Acid

B - BULK **F** - FROZEN **X** - FREE FROM

Commodity Code: 100047

Product Specifications

UPC/GTIN	10038057100807
Distributed	Frozen
Shelf Life	365 Days Frozen
Servings per Case	270
Pack Size	6/5 lb.
Net Weight	30 lbs.
Gross Weight	31.6 lbs.
Box Dimensions	13" x 8.882" x 10.453"
Cube	0.70 Cubic Ft
Pallet	15 Tie X 5 High (75 boxes)
Material Pack Type	Carton
CN Labeled	No
Religious Designation	Kosher

Nutrition Facts

Serving Size	50g	
Calories Per Serving	70	
Calories From Fat	40	
		% Daily Value
Total Fat	4.5g	7%
Saturated Fat	1.5g	8%
Trans Fat	0g	
Cholesterol	210mg	71%
Sodium	65mg	3%
Total Carbohydrates	1g	0%
Dietary Fiber	0g	0%
Sugars	0g	
Protein	6g	

Vit. A 6% • Vit. C 0% • Calcium 2% • Iron 4%

For more information, visit us at sunnyfresh.com or call 1-800-872-3447.

Order today by contacting your Cargill Sales Representative.



©2019 Cargill, Incorporated | Last Update: 04/2019

DSM Ingredients Labels

Item 510-8100 – San Antonio Chorizo

Ingredients: Pork, vinegar, seasoning (paprika, salt, monosodium glutamate, garlic powder, extractives of paprika, partially hydrogenated soybean oil and natural flavor) and water.

Nutrition Facts

510-8100

Serving Size Custom Food 57g (57 g)

Amount Per Serving

Calories 160 **Calories from Fat** 130

% Daily Value*

Total Fat 15g	23%
Saturated Fat 6g	30%
Trans Fat 0g	
Cholesterol 50mg	17%
Sodium 330mg	14%
Total Carbohydrate 0g	0%
Dietary Fiber 0g	0%
Sugars 0g	

Protein 7g

Vitamin A 0% • Vitamin C 0%
Calcium 0% • Iron 6%

*Percent Daily Values are based on a 2,000 calorie diet.
Your daily values may be higher or lower depending on
your calorie needs:

	Calories	2,000	2,500
Total Fat	Less than	65g	80g
Sat Fat	Less than	20g	25g
Cholesterol	Less than	300mg	300mg
Sodium	Less than	2,400mg	2,400mg
Total Carbohydrate		300g	375g
Fiber		25g	30g

Calories per gram:

Fat 9 • Carbohydrate 4 • Protein 4

©www.NutritionData.com

Chorizo

NUTRIENT INFORMATION FOR UNITED SALT CORPORATION PRODUCTS

UNITED SALT BAYTOWN PRODUCING PLANT

**EVAPORATED FOOD GRADE SALT – IODIZED
(IODIZED SALT)**

PLEASE PROVIDE THE FOLLOWING NUTRIENT INFORMATION:
(Value / 100 g)

Moisture (g)	0.05	Total Carbohydrates (g)	Zero
Protein (g)	Zero	Dietary Fiber (g)	Zero
Crude Fiber (g)	Zero	Total Sugars (g)	Zero
		Added Sugars (g)	Zero
Ash (g)	N A	Fat (g)	Zero
Sodium (mg)	39300	Polyunsaturated (g)	Zero
Potassium (mg)	1	Monounsaturated (g)	Zero
Cholesterol (mg)	Zero	Saturated (g)	Zero
		Trans Fat (g)	Zero
Thiamine (mg)	Zero	Vitamin A (IU)	Zero
Riboflavin (mg)	Zero	Vitamin C (mg)	Zero
Niacin (mg)	Zero	Calcium (mg)	1
Vitamin D (IU)	Zero	Iron (mg)	0.15
Folic Acid (mcg)	Zero	Vitamin B6 (mcg)	Zero
Phosphorus (mg)	Zero	Vitamin B12 (mcg)	Zero
Zinc (mg)	Zero	Magnesium (mg)	Zero
Iodide (mg)	7.64		

The above values are derived from an analytical method.

Updated January 2017.

Reviewed January 2022.

Nutrition Facts
Datos de Nutrición

491 servings per container / 491 porciones por envase
Serving size 1/4 tsp (1.5g) / Tamaño por Ración 1/4 c. (1.5g)

Amount per serving / Cantidad por ración
Calories / Calorías 0

% Daily Value* / % Valor Diario*

Total Fat / Grasa Total 0g 0%

Trans Fat / Grasa Trans 0g

Sodium / Sodio 590mg 26%

Total Carbohydrate / Carbohidrato Total 0g 0%

Protein / Proteína 0g 0%

Iodine / Yodo 67mcg 45%

Not a significant source of calories, total fat, saturated fat, trans fat, cholesterol, total carbohydrate, dietary fiber, total sugars, added sugars, protein, vitamin D, calcium, iron, and potassium.

No es una fuente significativa de calorías, grasa total, grasa saturada, grasa trans, colesterol, carbohidrato total, fibra, azúcares totales, azúcares añadidos, proteína, vitamina D, calcio, hierro, y potasio.

*The % Daily Value tells you how much a nutrient in a serving of food contributes to a daily diet. 2,000 calories a day is used for general nutrition advice.

*El % de Valor Diario le indica la cantidad de un nutriente en una porción de alimento contribuye a una dieta diaria. 2,000 calorías diarias se usó como recomendación general de nutrición.

INGREDIENTS: SALT, POTASSIUM IODIDE, DEXTROSE, SODIUM BICARBONATE AND YELLOW PRUSSIAN OF SODA
INGREDIENTES: SAL, YODURO DE POTASIO, DEXTROSA, BICARBONATO DE SODIO Y AMARILLO PRUSIANO DE SODA

Produced by / Producido por:
United Salt Baytown, LLC
7961 FM 1405 Rd
Baytown, Texas 77521

Distributed by / Distribuido por:
United Salt Corp.
Houston, Texas 77001

MADE IN THE USA / HECHO EN USA



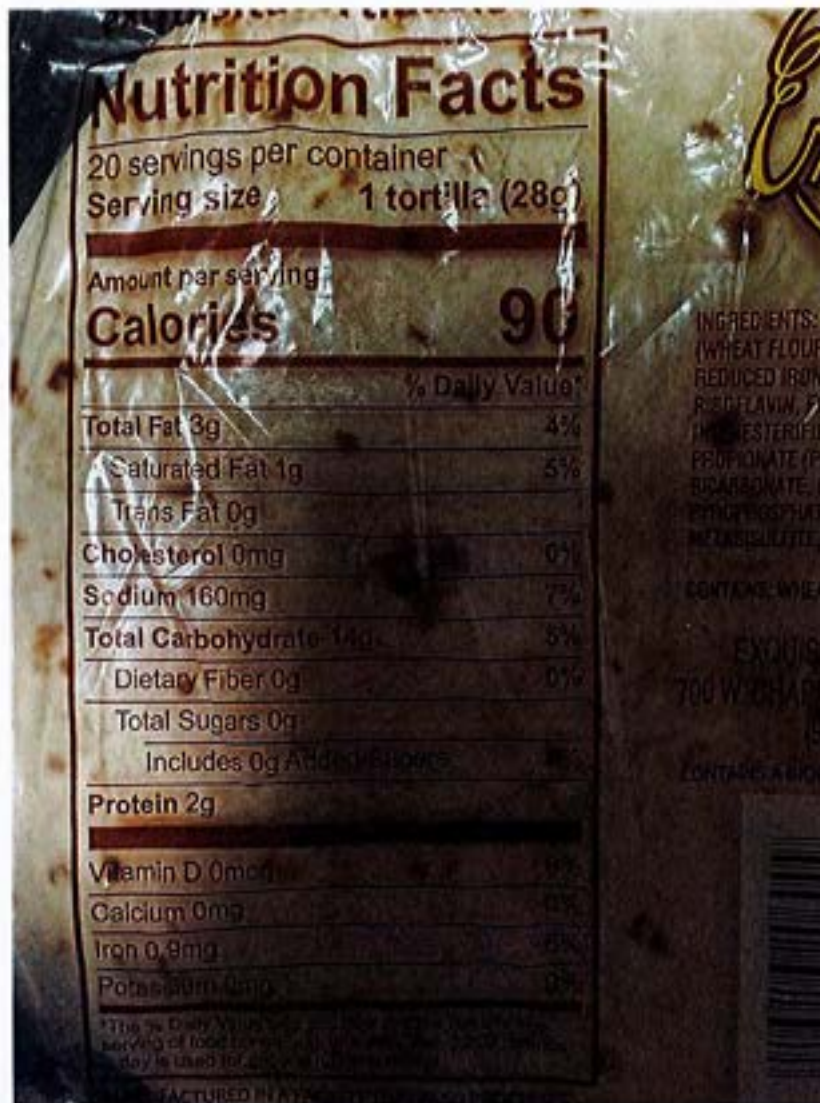


Photo taken:
 6/26/2025

271106 - JENNIE-O® PERFECT SLICE Premium Turkey Bacon Fully Cooked, 12pc



2025 - 2026 School Year



Ingredients

Ingredients: Dark and White Turkey, Water, Sugar, Salt, Contains 2% Or Less Natural Smoke Flavoring, Sodium Erythorbate, Natural Flavoring, Sodium Nitrite, Vegetable Oil.

Product Information

Fully cooked and for ease of preparation. Consistent sized slices for portion control and excellent coverage. Traditional bacon appearance, flavor, and texture. Gas flushed packages to allow use of one or many slices at a time.

Specifications

Ship Container UPC	10042222271100		
Total Shelf Life	365	Shelf Life on Arrival	60
Pallet Pattern	6 x 6	Full Pallet	36
Catch Weight?	No		

Nutritional Information per 28g

Nutrition Facts

about 120 Servings Per Container

Serving Size 1.00 oz (28g)

Amount Per Serving

Calories 120

	% Daily Value*
Total Fat 8g	10%
Saturated Fat 2g	10%
Trans Fat 0g	
Cholesterol 35mg	12%
Sodium 620mg	27%
Total Carbohydrate 1g	0%
Dietary Fiber 0g	0%
Total Sugars 1g	
Includes 1g Added Sugars	2%
Protein 10g	
Vitamin D 0mcg	0%
Calcium 0mg	0%
Iron 0.40mg	2%
Potassium 90mg	2%

* % Daily Value (DV) tells you how much a nutrient in a serving of food contributes to a daily diet. 2,000 calories a day is used for general nutrition advice.

Allergen Content
No Big 9 Allergens Present

Master Dimensions

Case Dimensions	17.38"L x 15.88"W x 7.13"H	Cubic Feet	1.14CF
Net Weight	7.50 LB	Gross Weight	9.174 LB
Pack	12 / 0.625LB	Servings Per Case	about 120

Basic Preparation Instructions

UNPREPARED

BAKE—Preheat to 350°F. Do not oil the pan. Place slices on baking sheet single layer, heat in oven for 7 to 8 minutes. Remove and serve. **MICROWAVE**—Place 4 slices in a single layer on a paper towel lined microwave-safe plate. Heat on high for 15-20 seconds. Microwave ovens vary. **CONVECTION**—Preheat to 350°F. Do not oil the pan. Place slices on baking sheet single layer, heat in oven for 4 to 4½ minutes. Remove and serve. **SEAR**—Preheat to 350°F. Do not oil grill. Place slices on grill in a single layer, turn bacon at 1½ minutes, and cook for a total of 3 minutes. Remove and serve.

I certify that the above information is true and correct and that a 1.00 OZ serving of the above product (ready for serving) contains 1.00 OZ of equivalent meat/meat alternate when prepared according to directions.

I further certify that any VPP used in this product is authorized as an alternate food in the Child Nutrition Programs and its use conforms to Food and Consumer Service Regulations (7CFR part s 210, 225 or 226, Appendix A).

<u>Alex Reynolds</u>	Quality Systems Associate Hormel Quality Control
Signature	Title
Alex Reynolds	July 1, 2025
Printed Name	Date

Jennie-O Turkey Store Products are classified as "Buy American", meaning that the products are processed in the United States and over 51% of the cost of all components of the end item are domestic in origin as defined by the Buy American Act.



©2026 JENNIE-O TURKEY STORE, LLC
P.O. Box 778 Willmar, MN 56201

www.hormelfoodservice.com/k12

Printed on Feb 2, 2026 at 12:17 PM

Product:
BUNGE NUTRA CLEAR CANOLA SALAD OIL

Material Code	Pack Size	GTIN/UPC	Bunge Internal code	Religious Certification
5026973	CASE - 3 / 1GAL	10 078684 63036 0	A0200058000000	OU Parve
Ingredient Declaration Canola Oil.				

Nutrition Information

NUTRITIONAL INFORMATION- Serving Size---->	14 grams (1 Tablespoon)	Percent of Daily Value based on 2000 cal diet	100 grams
Servings per container	* See below		
Calories	130 Calories		900 Calories
% of calories from fat	100 %		100 %
Total Fat	14 g	18 %	100 g
Saturated Fat, grams	1 g	5 %	7 g
Trans Fatty Acids, grams	0 g		1 g
Polyunsaturated Fat, grams	4 g		27 g
Monounsaturated Fat, grams	8 g		57 g
Cholesterol, mg	0 mg	0 %	0 mg
Sodium, mg	0 mg	0 %	0 mg
Total Carbohydrates, grams	0 g	0 %	0 g
Protein, grams	0 g		0 g
Not a significant source of dietary fiber, total sugars, added sugars, vitamin D, potassium, calcium and iron.			

* Container
1 GAL

Servings per container
256

The Fatty Acid nutritional analysis was determined using AOCs method Ce 1h-05, which complies with regulation CFR 21.101.

The total fat percentage is expressed as triglyceride and the fatty acid percentages are expressed as free fatty acids. The total on the individual fatty acids may not equal total fat percentage due to the exclusion of the glycerol backbone in the fatty acid calculation.

The information contained in this document is, to our best knowledge, accurate. This information is provided for informational purposes only and does not constitute a warranty or guaranty (express or implied) of any kind, including, but not limited to, any warranty of merchantability, fitness for a particular purpose or noninfringement. This document does not establish a contract between Bunge and any third party.

Bunge North America
 1391 Timberlake Manor Parkway
 Chesterfield, MO
 USA 63017
www.bungenorthamerica.com

Customer Relations
 1-800-828-0800

PO-US

Product:
BUNGE NUTRA CLEAR CANOLA SALAD OIL

Material Code	Pack Size	GTIN/UPC	Bunge Internal code	Religious Certification
5026973	CASE - 3 / 1GAL	10 078684 63036 0	A0200058000000	OU Parve
Ingredient Declaration Canola Oil.				

Allergen Information

Allergen Component	Column 1 Present in the product	Column 2 Present in other products manufactured on the same line	Column 3 Present in the same manufacturing plant
Peanuts or Peanut products	No	No	No
Tree Nuts - Walnuts, Almonds, Coconuts, Cashews, Pecans, Hazelnuts (Filberts), Brazil Nuts, Pistachios, Pine Nuts, Macadamia.	No	No	No
Milk or Milk Products	No	No	Yes-Nonfat dry milk Yes-Butter Yes-Buttermilk Yes-Whey
Eggs or Egg Products	No	No	No
Soybeans or Soybean Products	No	No	Yes-Soy lecithin
Wheat or Wheat Products	No	No	No
Gluten - Wheat, Barley, Rye, Triticale, Oats, Spelt	No	No	No
Seafood, Crustacean, Shellfish	No	No	No
Seeds - Cotton, Poppy, Sunflower, Sesame, Mustard	No	No	No
Celery - Root, Leaves, Stalk, NOT Seed	No	No	No
Sulfites (Sensitivity Issue)	No	No	No
FD&C Artificial Color	No	No	No

Does the food contain an undeclared allergenic ingredient that is a derivative of one of the twelve(12) ingredients listed in this guide?: **NO**

The information contained in this document is, to our best knowledge, accurate. This information is provided for informational purposes only and does not constitute a warranty or guaranty (express or implied) of any kind, including, but not limited to, any warranty of merchantability, fitness for a particular purpose or noninfringement. This document does not establish a contract between Bunge and any third party.

Bunge North America
 1391 Timberlake Manor Parkway
 Chesterfield, MO
 USA 63017
www.bungenorthamerica.com

Customer Relations
 1-800-828-0800

PO-US

Product:
BUNGE NUTRA CLEAR CANOLA SALAD OIL

Material Code	Pack Size	GTIN/UPC	Bunge Internal code	Religious Certification
5026973	CASE - 3 / 1GAL	10 078684 63036 0	A0200D58000000	OU Parve
Ingredient Declaration Canola Oil.				

Product Information

AVAILABLE PACK SIZES:	CASE - 35LB, CASE - 2/17.5LB, CASE - 3/1GAL, DRUM - 420LB, TOTE - 2000LB	
PALLET CONFIGURATION:	60 units per pallet 15 units per layer - 4 layers	
PALLET DIMENSIONS:	LxHxW:	48 IN x 55.8 IN x 40 IN
CASE DIMENSIONS:	LxHxW:	13.5 IN x 12.5 IN x 7.8 IN
CASE CUBE:	0.76 Cubic Feet	
CASE NET WEIGHT:	23.10 LB	
CASE GROSS WEIGHT:	24.89 LB	
DESCRIPTION:	A highly refined canola oil. It is 93% saturated-fat free and contains no additives. An exceptional oil for general kitchen needs.	
MAJOR APPLICATIONS:	Sauces, General Cooking, Light Duty Frying, Salad Oil	
FEATURES/BENEFITS:	<ul style="list-style-type: none"> • Zero Grams Trans Fat per serving. Improves nutritional profiles of your foods. • Bland Flavor. Lets the delicate natural flavors of your foods come through. • Low Saturates Fat Level per serving - Appeals to the health-conscious public 	
TYPICAL PHYSICAL PROPERTIES:	Color, Red (ADCS)	1 Maximum
	Cold Test (hours)	12 Minimum
	Oil Stability Index @110°C (hrs)	7.5 Minimum
TYPICAL CHEMICAL PROPERTIES:	Free Fatty Acids (wt. %)	0.05 Maximum
	Peroxide Value (meq/kg)	1.0 Maximum
TYPICAL FUNCTIONAL PROPERTIES:	Flavor	Satisfactory
STORAGE CONDITIONS:	Recommended shipping and storage temperature between 65 °F - 85 °F.	

The information contained in this document is, to our best knowledge, accurate. This information is provided for informational purposes only and does not constitute a warranty or guaranty (express or implied) of any kind, including, but not limited to, any warranty of merchantability, fitness for a particular purpose or noninfringement. This document does not establish a contract between Bunge and any third party.

Bunge North America
 1391 Timberlake Manor Parkway
 Chesterfield, MO
 USA 63017
www.bungenorthamerica.com

Customer Relations
 1-800-828-0800

PO-US

Product:
BUNGE NUTRA CLEAR CANOLA SALAD OIL

Material Code	Pack Size	GTIN/UPC	Bunge Internal code	Religious Certification
S026973	CASE - 3 / 1GAL	10 078684 63036 0	A0200D58000000	OU Parve
Ingredient Declaration				
Canola Oil.				

Does the food contain an undeclared allergenic ingredient that was used as a processing aid in the manufacture of the product?
 : **NO**

Does the food contain an undeclared allergenic ingredient, but the ingredient is not one of the twelve (12) allergens listed in this guide? : **NO**

Bunge vegetable oils are fully refined (refined, bleached and deodorized) and are NOT considered allergenic according to the Food Allergen Label and Consumer Protection Act of 2004 Sec 203. Food Labeling; Requirement of Information Regarding Allergenic Substances.

The information contained in this document is, to our best knowledge, accurate. This information is provided for informational purposes only and does not constitute a warranty or guaranty (express or implied) of any kind, including, but not limited to, any warranty of merchantability, fitness for a particular purpose or noninfringement. This document does not establish a contract between Bunge and any third party.

Bunge North America
 1391 Timberlake Manor Parkway
 Chesterfield, MO
 USA 63017
www.bungenorthamerica.com

Customer Relations
 1-800-828-0800

PO-US

Product:
BUNGE NUTRA CLEAR CANOLA SALAD OIL

Material Code	Pack Size	GTIN/UPC	Bunge Internal code	Religious Certification
S026973	CASE - 3 / 1GAL	10 078684 63036 0	A0200D5800000	OU Parve
Ingredient Declaration Canola Oil.				

PACKAGE SHELF LIFE:	12 months from the date of manufacture when stored at recommended temperatures in unopened containers.
CODE DATING:	4 digit day code with the last digit of the year and the Julian date, followed by the 4 digit Bunge facility number and a 2 digit batch code. Example 4047 XXXX A1 47th day 2014 Bunge Plant ID Batch #
REGULATORY COMPLIANCE:	This product conforms to all United States Federal Food, Drug and Cosmetic Act. All Bunge manufacturing sites within North America are registered with the FDA in compliance with the Bio-terrorism Preparedness and Response Act. This product may contain incidental additives as allowed per 21 C.F.R. 101.100. If you are exporting the product, or incorporating it into a product to be exported, you are responsible for ensuring regulatory compliance in the country to which you are exporting.
MICROBIOLOGICAL STATEMENT:	Oils and shortenings are not attacked by microbial species, since there must be a nutrient containing aqueous phase in which the organism can grow. The moisture content of this product will be below 0.1%; at this moisture level product will not support any microbial growth.

The information contained in this document is, to our best knowledge, accurate. This information is provided for informational purposes only and does not constitute a warranty or guaranty (express or implied) of any kind, including, but not limited to, any warranty of merchantability, fitness for a particular purpose or noninfringement. This document does not establish a contract between Bunge and any third party.	
Bunge North America 1391 Timberlake Manor Parkway Chesterfield, MO USA 63017 www.bungenorthamerica.com	Customer Relations 1-800-828-0800 PO-US



The J.M. Smucker Company
FINISHED PRODUCT SPECIFICATION

Smucker's® Uncrustables® Brand 2.6 oz Peanut Butter and Grape Jelly Sandwich
Made with Sugar on Wheat Bread (51500-06960)

ITEM INFORMATION

<u>DESCRIPTION</u>	<u>NET WEIGHT</u>	<u>UNITS/CASE</u>	<u>UPC CODE</u>
Smucker's® Uncrustables® Brand Peanut Butter and Grape Jelly Sandwich on Wheat Bread	2.6 oz (76g)		72 51500-06960

PRODUCT INFORMATION

GENERAL DESCRIPTION	Peanut butter and grape jelly sandwich on wheat bread made with the crust trimmed off, individually wrapped and frozen. Each 2.6 oz sandwich (ready for serving) contains 1.0 ounce of equivalent cooked lean meat/meat alternate and 1.0 ounce equivalent serving of grains/breads.
ALLERGENS KOSHER CERTIFICATION	Peanuts, Wheat Kosher-Orthodox Union – Pareve
LABEL CLAIMS/WARNINGS	Whole Grain Council Stamp 8g or more per serving Eat 48g or more of whole grains daily NSF Certified non-GMO

STORAGE & HANDLING

Product must be transported and stored at 0°F ± 10° F.
Do not microwave
Uncrustables can be merchandised in three ways: Frozen, Refrigerated, Ambient.

1) Merchandise Frozen

- a. Keep the product in the freezer either in cases, cartons, or individually. To consume, thaw at room temperature for 30-60 minutes.

2) Merchandise Refrigerated

- a. To merchandise individual sandwiches, remove frozen individual sandwiches from freezer and place directly into the refrigeration unit. Product can be held refrigerated for up to 24 hours; holding beyond 24 hours will quickly dry out the bread. For best consumer experience, product should be held at room temperature for 30-60 minutes prior to consumption. Dispose of any unsold product after 24 hours.

3) Merchandise Ambient

- a. Remove frozen sandwiches from the carton; thaw individual sandwiches at room temperature for 30-60 minutes. Do not refreeze or refrigerate unsold product. Dispose of any unsold product after 10 hours.

SHELF LIFE



**The J.M. Smucker Company
FINISHED PRODUCT SPECIFICATION**

Smucker's® Uncrustables® Brand 2.6 oz Peanut Butter and Grape Jelly Sandwich

SHELF LIFE, FROZEN	9 months from production date
SHELF LIFE, REFRIGERATED	24 hours
SHELF LIFE, AMBIENT	10 hours

Made with Sugar on Wheat Bread (51500-06960)

MICROBIOLOGICAL PROPERTIES

<u>PROPERTY</u>	<u>SPECIFICATION</u>
AEROBIC PLATE COUNT	<10,000/g
<i>E. coli</i>	Negative
<i>S. aureus</i>	<100/g
SALMONELLA	Negative
<i>L. monocytogenes</i>	Negative

PRODUCTION CODE INFORMATION

CASE
(2 line code) **BEST IF USED BY MMM DD YYYY**
Best if used by code: MMM = Month, DD = Day, YYYY = Year
[Example: SEP 05 2008]

Y DDD PPP HH:MM L
Manufacturing date code: Y = Year, DDD = Julian day,
PPP = Manufacturing location, HH:MM = Military time,
L = Manufacturing line
[Example: 7 339 465 14:45 2]

POUCH **Y DDD PPP HH:MM L**
Manufacturing date code: Y = Year, DDD = Julian day,
PPP = Manufacturing location, HH:MM = Military time,
L = Manufacturing line
[Example: 7 339 465 14:45 2]

Made with Sugar on Wheat Bread (51500-06960)



The J.M. Smucker Company
FINISHED PRODUCT SPECIFICATION

Smucker's® Uncrustables® Brand 2.6 oz Peanut Butter and Grape Jelly Sandwich
NUTRITION FACTS & INGREDIENT DECLARATION

Nutrition Facts

72 servings per container
Serving size 1 sandwich (76g)

Amount per serving
Calories 300

	% Daily Value*
Total Fat 17g	21%
Saturated Fat 3g	15%
Trans Fat 0g	
Cholesterol 0mg	0%
Sodium 280mg	12%
Total Carbohydrate 32g	12%
Dietary Fiber 4g	13%
Total Sugars 14g	
Includes 12g Added Sugars	25%
Protein 9g	
Vitamin D 0mcg	0%
Calcium 26mg	2%
Iron 1mg	8%
Potassium 244mg	6%

*The % Daily Value tells you how much a nutrient in a serving of food contributes to a daily diet. 2,000 calories a day is used for general nutrition advice.

INGREDIENTS: PEANUT BUTTER: PEANUTS, SUGAR, CONTAINS 2% OR LESS OF: MOLASSES, FULLY HYDROGENATED VEGETABLE OILS (RAPESEED AND SOYBEAN), MONO AND DIGLYCERIDES, SALT. BREAD: UNBLEACHED WHOLE WHEAT FLOUR, ENRICHED UNBLEACHED FLOUR (WHEAT FLOUR, MALTED BARLEY FLOUR, NIACIN, FERROUS SULFATE, THIAMIN MONONITRATE, RIBOFLAVIN, FOLIC ACID), WATER, SUGAR, YEAST, CONTAINS 2% OR LESS OF: WHEAT GLUTEN, SOYBEAN OIL, SALT, DOUGH CONDITIONERS (DISTILLED MONO AND DIGLYCERIDES, SODIUM STEAROYL LACTYLATE, DATEM, ENZYMES [WITH WHEAT STARCH, ASCORBIC ACID, CALCIUM PEROXIDE]). GRAPE JELLY: SUGAR, GRAPE JUICE, CONTAINS 2% OR LESS OF: PECTIN, CITRIC ACID, POTASSIUM SORBATE (PRESERVATIVE).

CN 095165

Each 2.68 oz Peanut Butter and Grape Jelly Sandwich on Wheat Bread provides 1.00 oz equivalent meat alternate and 1.00 oz equivalent grains for the Child Nutrition Meal Pattern Requirements. (Use of this logo and statement authorized by the Food and Nutrition Service, USDA 10-16).

CN

INSPECTED BY THE
U.S. DEPT. OF AGRICULTURE
IN ACCORDANCE WITH
FNS REQUIREMENTS

CERTIFICATION STATEMENT

I certify that the above information is true and correct. Product specification information does not represent lot specific data.

Danette Cozart, Corporate QA Manager

CERTIFICATION DATE 10/24/2022

REVISION NUMBER: 01



The J.M. Smucker Company
PRODUCT FORMULATION STATEMENT

Smucker's® Uncrustables® Brand 2.6 oz Sandwich on Wheat Bread

ITEM INFORMATION

DESCRIPTION	NET WEIGHT	UNITS/CASE	UPC CODE
Smucker's® Uncrustables® Brand Sandwich on Wheat Bread	2.6 oz (76g)	72	51500-06960
			51500-06961

GRAINS/BREADS CALCULATIONS

REFERENCE	Food Buying Guide for Child Nutrition Programs Revised November 2001 Section 3 Grains/Breads; USDA Memo Code SP 30-2012: Revised exhibit A weights per oz equivalent
EXHIBIT A PRODUCT GROUP	Group B: Breads
PORTION SIZE AS PURCHASED	28 gm
WEIGHT OF 1 OUNCE EQUIVALENT AS LISTED IN SP 30-2012	1 oz eq = 28 gm
WHOLE GRAIN RICH EQUIVALENCY CREDIT	28.0 gm in product + 28.0 gm serving size = 1 oz eq (rounded down to the nearest 0.25 oz) This product meets Whole Grain-Rich criteria This product does not contain non-creditable grains

MEAT/MEAT ALTERNATE CALCULATIONS

REFERENCE	Food Buying Guide for Child Nutrition Programs Revised November 2001 Section 1 Meat/Meat Alternates
COLUMN 1 FOOD AS PURCHASED, AP	Peanut Butter
COLUMN 4 SERVING SIZE PER MEAL CONTRIBUTION	2 tablespoons nut/seed butter (1.1 oz) = 1 oz equivalent meat/meat alternate
WEIGHT OF MEAT ALTERNATE IN PRODUCT	1.1 oz
EQUIVALENT MEAT/MEAT ALTERNATE CREDIT	1.1 oz in product + 2 tablespoons nut/seed butter (1.1 oz) = 1.0 oz equivalent (rounded down to the nearest 0.25 oz)

PRODUCT FORMULATION STATEMENT PAGE 1 OF 2

PRODUCT FORMULATION STATEMENT



The J.M. Smucker Company
Smucker's® Uncrustables® Brand 2.6 oz Sandwich on Wheat Bread

CERTIFICATION / CREDITING STATEMENT

I certify that the above information is true and correct and that a 2.60 ounce serving of the above product (ready for serving) contains 1.0 ounce of equivalent cooked lean meat/meat alternate and 1.0 ounce equivalent serving of Grains/Breads for the Child Nutrition Programs when prepared according to the directions. I further certify that non-creditable grains **are not** above 0.24 oz eq per portion.

Becky L. Hostetler

Becky Hostetler, Senior Manager, Research & Development – Away From Home

CERTIFICATION DATE

10/24/2022

REVISION NUMBER: 01

Dave's Baking Company

NUTRITION & ANALYSIS SHEET

PRODUCT NAME: Whole Grain Blueberry Muffin
PRODUCT CODE: WG6239
PORTION SIZE: 3.6 oz. 102 gm
PACKED: 48
CASE NET WEIGHT: 10.8 lbs
CASE DIMENSIONS: 16"x12"x7"
UPC CODE: 04198106239-7
PALLETIZING: 10 tie X 10 hi

MEAL CONTRIBUTION:

EACH WHOLE GRAIN BLUEBERRY MUFFIN PROVIDES: 2 serving of grain, contains minimum 32 gm flour, minimum 51% of the flour as whole wheat, ¼ fruit.

INGREDIENTS:

Whole grain wheat flour, enriched wheat flour (contains niacin, reduced iron, thiamine mononitrate, riboflavin, folic acid), water, eggs, unsweetened applesauce, blueberries, sugar, vegetable oil (soybean), nonfat milk, baking powder, salt.

**Contains: Wheat, Egg, Soybean, Milk,
(Manufactured in a Peanut Free Plant)**

Shelf life: 10 months frozen, 7 days room temp.

Serving directions: Thaw at room temperature 6 hours

Prior to serving

May be heated in warmer at 150 F.

Do not re-pack after heating. Do not re-freeze. Do not refrigerate.

I certify that the above information is accurate at present on this date.

Name: David Aframian

Title: Vice President

Signature:

Date: January 10, 2020



Nutritional Analysis

Per Serving (102 gm)

Basic Components

Calories 268

Protein 4.5 g

Carbohydrates 45.5 g

Dietary Fiber 3.8 g

Sugar - Total 21 g

Fat - Total 7.5 g

Saturated Fat 1.1 g

Trans Fat 0 g

Cholesterol 34 mg

Vitamin A IU 57 IU

Vitamin C 1.1 mg

Calcium 9 mg

Iron 1.4 mg

Sodium 140 mg

Niacin 2.1 mg

Thiamin 0.21 mg

Riboflavin 0.12 mg

Calories from Fat 68

DAVE'S BAKING COMPANY

1158 26th Street, suite 463 . Santa Monica . CA 90403 . Tel (310) 630-5873 . Fax (310) 630-5865

Quality Baked Products Since 1960

Product Formulation Statement

Product Name: Whole Grain Blueberry Muffin **Item number:** WG6239

Manufacturer: Dave's Baking Co.

Case Weight and Pack/Count: 10.8 lbs; 48 servings per case

Weight of one Serving of Product: 3.6 oz, 102 gm

Product WG6239 Belongs to Exhibit A Group: D

Grain Ingredients per serving: Whole wheat flour (18.5gm), Enriched wheat flour (17.4gm).

Description of Creditable Grain Ingredient	Grams of Creditable Grain Ingredient per Portion A	Gram Standard of Creditable Grain per oz equivalent B	Creditable Amount A + B
Whole Grain Wheat Flour	18.5	16	1.15
Enriched Wheat Flour	17.4	16	1.08
Total Creditable Amount			2.2

Description of Creditable Fruit Ingredient	OZ of Creditable Fruit Ingredient per Portion	Cups of Edible Portion per Recipe from FBG A	Multiply by Crediting Factor B	Creditable Amount A x B
Blueberries IQF	0.9 oz	0.13	1	0.16
Apple Sauce	1.1 oz	0.12	1	0.12
Total Creditable Amount				0.28

I certify that the above information is true and correct and that one serving of the above product (ready to eat) contains **Two** serving of Grain. I further certify that non-creditable grains are not above 0.24 oz eq. per portion.

Name: David Aframian

Date: January 10, 2020

Title: Vice President





95121 - WHOLE GRAIN MAPLE (TURKEY)
PANCAKE WRAPS®, 2.85 OZ., CN



Nutrition Facts

Serving Size 1 WRAP (2.85 oz.) 80g
Servings Per Container: 56

Amount Per Serving

Calories 200 Calories from Fat 90

		% Daily Value*
Total Fat	10g	15%
Saturated Fat	2.5g	13%
Trans Fat	0g	
Cholesterol	25mg	8%
Sodium	310mg	13%
Total Carbohydrate	17g	6%
Dietary Fiber	3g	12%
Sugars	4g	
Protein	7g	

Vitamin A 0% • Vitamin C
Calcium 2% • Iron 10%

*Percent Daily Values are based on a 2,000 calorie diet. Your daily values may be higher or lower depending on your calorie needs.

	Calories:	2,000	2,500
Total Fat	Less than	65g	80g
Sat Fat	Less than	20g	25g
Cholesterol	Less than	300mg	300mg
Sodium	Less than	2,400mg	2,400mg
Total Carbs.		300g	375g
Dietary Fiber		25g	30g

Calories per gram:
Fat 9 • Carbohydrate 4 • Protein 4

Product Specifications

GTIN	00075278951217	Case Net Weight	10 LB
Item UPC		Case L,W,H	17 IN, 11 IN, 4.88 IN
EDI UPC	007527895121	Cube	0.53 CF
Unit Size	1/56 CT.	Tie x High	9 x 12
Case Gross Weight	11 LB	Kosher Status	

Features & Benefits

- FULLY COOKED TURKEY LINK WRAPPED IN 100% WHOLE GRAIN MAPLE FLAVORED PANCAKE BATTER
- 2.85 OZ. UNIT
- CN LABELED - SERVES 1 OZ. MMA & 1 OZ. EQUIVALENT GRAINS

CN Information

CN LABELED - CN NUMBER 089719 - CN DATE 02-14 EACH 2.85 OZ. FOSTER FARMS PANCAKE BATTER WRAPPED GROUND TURKEY AND TEXTURED VEGETABLE PROTEIN LINK PROVIDES 1.00 OZ. EQUIVALENT MEAT/MEAT ALTERNATE AND 1.00 OZ. EQUIVALENT GRAINS.

Ingredients

GROUND TURKEY AND VEGETABLE PROTEIN LINK INGREDIENTS: GROUND TURKEY, MECHANICALLY SEPARATED TURKEY, WATER, TEXTURED VEGETABLE PROTEIN PRODUCT (SOY PROTEIN CONCENTRATE, ZINC OXIDE, NIACINAMIDE, FERROUS SULFATE, COPPER GLUCONATE, VITAMIN A PALMITATE, CALCIUM PANTOTHENATE, THIAMINE MONONITRATE, PYRIDOXINE HYDROCHLORIDE, RIBOFLAVIN, CYANOCOBALAMIN). CONTAINS LESS THAN 2% OF SALT, POTASSIUM LACTATE, POTASSIUM ACETATE, SPICES, SODIUM PHOSPHATE, POTASSIUM CHLORIDE, SUGAR, NATURAL FLAVORING, SODIUM DIACETATE, SODIUM NITRITE. BATTER INGREDIENTS: WATER, WHOLE WHEAT FLOUR, SUGAR, SOYBEAN OIL, CONTAINS LESS THAN 2% OF LEAVENING (SODIUM ACID PYROPHOSPHATE, SODIUM BICARBONATE), MAPLE FLAVOR (MODIFIED CORN STARCH, STEVIA LEAF EXTRACT [NATURAL SWEETNER], NATURAL FLAVOR, PURE MAPLE SYRUP), SOY FLOUR, SALT, NATURAL FLAVOR, EGG YOLK, FRIED IN VEGETABLE OIL. **CONTAINS WHEAT, SOY AND EGGS.**

Preparation and Cooking

RE HEATING INSTRUCTIONS DEEP FRYER 350°F - FROZEN: NOT RECOMMENDED; MICROWAVE HIGH (1100 WATTS) - FROZEN: 30 SECONDS, TURN THEN 30 MORE SECONDS; THAWED: 20-25 SECONDS, TURN THEN 20-25 MORE SECONDS - QUANTITY - 2 CONVENTIONAL OVEN 350°F - FROZEN: 31-33 MINUTES; THAWED 22-25 MINUTES. QUANTITY - FULL SHEET PAN CONVECTION OVEN 350°F - FROZEN: 16-18 MINUTES; THAWED 10-12 MINUTES. QUANTITY - FULL SHEET PAN INTERNAL TEMPERATURE OF PRODUCT SHOULD REACH 160°F. CAUTION: PRODUCT WILL BE HOT. TIMES AND TEMPERATURES MAY VARY BASED ON ACTUAL EQUIPMENT AND QUANTITY OF PRODUCT PREPARED. ADJUST ACCORDINGLY.

Shelf Life

TOTAL MFR, FROZEN SHELF LIFE IS 365 DAYS FROM DATE OF PACK



C



Country Breakfast Scramble (turkey, sausage, eggs, cheese & potatoes)

JTM Item Number: 5164

Product Title

TURKEY SAUSAGE BREAKFAST SCRAMBLE
BREAKFAST MIX WITH EGGS, TURKEY SAUSAGE, CHEESE AND POTATOES

Nutritional Information	Per Serving	Per 100 Grams
Serving Size (oz.)	3.65	3.53
Serving Size (g)	103.50	100.00
Servings Per Case	131	136
Calories (kcal)	186	179
Protein (g)	11	11
Carbohydrates (g)	9	9
Dietary Fiber (g)	1	1
Total Sugar (g)	1	1
Added Sugar (g)	0	0
Fat (g)	11	11
Saturated Fat (g)	4.6	4.47
Trans Fatty Acid (g)	0.0	0.00
Cholesterol (mg)	118	114
Vitamin D (mcg)	0	0
Calcium (mg)	140	135
Iron (mg)	1	1
Potassium (mg)	346	334
Sodium (mg)	414	400

Ingredients

WATER, COOKED SCRAMBLED EGGS (whole eggs, skim milk, soybean oil, modified food starch, salt, xanthan gum, liquid pepper extract, citric acid), COOKED TURKEY SAUSAGE (ground turkey, water, sugar, salt, spices, natural flavor, sodium phosphates), CHEDDAR CHEESE (pasteurized milk, cheese culture, salt, enzymes), DEHYDRATED POTATOES (with sodium bisulfite), CONTAINS LESS THAN 2% OF MODIFIED FOOD STARCH, NONFAT DRY MILK, SODIUM PHOSPHATES AND POTASSIUM PHOSPHATES, SEASONING (potassium chloride, flavor [contains maltodextrin]), PAPRIKA EXTRACT, ANNATTO EXTRACT, SOY LECITHIN.

CN Statement: CN ID Number:100347

This 30 lb case provides 131 servings 3.65 oz each. Each 3.65 oz serving (by weight) of Turkey Sausage Breakfast Scramble provides 2.00 oz equivalent meat/meat alternate for Child Nutrition Meal Pattern Requirements. (Use of this logo and statement authorized by the Food and Nutrition Service, USDA 04-23).

J.T.M. Food Group certifies that all K12 Education Division products are manufactured in the USA and that all products meet or exceed 51% domestic ingredients per Section 104(d) of the William F. Goodling Child Nutrition Reauthorization Act of 1998. For addition information, please contact us at 800-626-2308.

Allergens

Soy, Milk, Egg

*Pork free, ~~chicken~~
wheat free*

Preparation

KEEP FROZEN Place sealed bag in a steamer or in boiling water. Heat Approximately 45 minutes or until product reaches serving temperature. CAUTION: Open bag carefully to avoid being burned.

Product Specifications

UPC (GTIN)	00049485051640
Case Pack	6/5# 30#
Net Weight	30.000
Gross Weight	31.300
Case Length	15.440
Case Width	11.810
Case Height	6.880
Case Cube	0.730
TixHi	10x7
Shelf Life	730



PRODUCT SPECIFICATION SHEET

Product Code No.: 4739B

Product Name: WHOLE GRAIN SAUSAGE ROLL
Smoked Knockwurst with Cheese Baked in Dough

The nutrition information is generated based on the most current data furnished to us by our suppliers and is accurate to the best of our knowledge.

Handling Instructions: HOLD AT OR BELOW 0°F. DO NOT REFREEZE UNUSED PORTIONS.

Heating Instructions: MICROWAVE: FROM FROZEN - HEAT ON HIGH FOR 90 SECONDS. FROM THAWED - HEAT ON HIGH FOR 25 TO 30 SECONDS.

CONVENTIONAL & CONVECTION OVEN: (FROZEN NOT RECOMMENDED). FROM THAWED, PLACE ON UNGREASED BAKING SHEET. CONVENTIONAL OVEN: BAKE AT 350°F FOR 10-12 MINUTES. CONVECTION OVEN: BAKE AT 325°F FOR 8-10 MINUTES.

COMBI OVEN (DRY HEAT SETTING): FROM FROZEN - BAKE AT 320°F FOR 10 MINUTES. FROM THAWED - BAKE AT 320°F FOR 5 MINUTES.

(CHECK TEMPERATURES AS INDIVIDUAL APPLIANCE SETTINGS MAY VARY).

Bid Specifications: SAUSAGE ROLL-FULLY COOKED, SKINLESS SMOKED PORK, CHICKEN, & BEEF SAUSAGE WITH CHEESE, WRAPPED IN DOUGH MADE OF AT LEAST 51% WHOLE WHEAT FLOUR AND ENRICHED WHEAT FLOUR, NO PARTIALLY HYDROGENATED OILS, APPROX. MIN. WEIGHT 2.5 OZ., CN LABEL REQUIRED TO PROVIDE 1 OZ. MEAT AND 1.5 SERVINGS GRAIN/BREAD. NOT TO EXCEED 550 MG OF SODIUM OR 11 G OF FAT, 0 TRANS FAT, AND PROVIDE 13.25 G OF WHOLE GRAINS.

Prepared By: *Sherri Martin*

Title: Regulatory & Nutrition Specialist

Date: 7/12/21

Supersedes: 03/22/21

109 E. Morgan St. Meridian, TX 76665

Confidential - Trade Secret Information

Page 2



Tyson® Fully Cooked, Whole Grain Breaded, Pancake Flavored Chicken Sausage Bites, 0.58 oz.

Grab, go, maybe grab a few more. Tyson® Fully Cooked, Whole Grain Breaded, Pancake Flavored Chicken Sausage Bites go fast first thing in the morning. These sweet and savory chicken sausages wrapped in pancake-flavored breading are bite-size breakfast sensations kids love. Serve them plain with a maple syrup side for dipping or serve pre-drizzled. Pair them with a variety of yogurts or make these tasty bites part of a full meal. Serve our pancake chicken sausages with eggs and a fresh fruit cup or with a bowl of oatmeal topped off with cinnamon, fruit or raisins. No matter how you serve them, they're going to be a morning favorite to a great day at school.

PRODUCT CODE: 10195430928 | GTIN CODE: 00923700050106

Product Claims & Allergens



Nutritional Facts

Serving Size	83g	
Serving Size 5 Pieces (83g)		
Amount Per Serving	220	
Calories		
	Amount Per Serving	% Daily Value*
Total Fat	13g	17%
Saturated Fat	3g	
Trans Fat	0g	
Cholesterol	40mg	13%
Sodium	300mg	16%
Total Carbohydrate	17g	6%
Dietary Fiber	2g	7%
Total Sugars	4g	
Added Sugars	4g	8%
Protein	10g	19%
Vitamin A		9%
Vitamin C	0mg	0%
Vitamin D	0mcg	0%
Calcium	10mg	0%
Iron	1mg	6%
Potassium	340mg	8%

CN STATEMENT

Five 0.58 oz. fully cooked, whole grain, pancake flavored chicken sausage bite patty fritters provide 1.00 oz. equivalent meat and 1.00 oz. equivalent grains for the Child Nutrition Meal Pattern Requirements. *The % Daily Value tells you how much a nutrient in a serving of food contributes to a daily diet. 2,000 calories a day is used for general nutrition advice.

To inquire if a signed copy of the product formulation statement or Child Nutrition statement is available for this item, please contact the Tyson Foodservice Customer Relations Team at 1-800-248-9756. Or email CustomerRelations@tyson.com.

Features & Benefits

- Made with fully cooked Tyson® chicken sausage, no artificial colors or flavors and no preservatives
- Coated in a unique, pre-sweetened whole grain-rich pancake batter to meet new USDA meal guidelines
- Bite-size, fun breakfast finger food for kids of all ages
- CN Labeled, Five 0.58 oz. fully cooked, whole grain, pancake flavored chicken sausage bites provide 1.00 oz. equivalent meat and 1.00 oz. equivalent grains for Child Nutrition Meal Pattern Requirements
- Eligible for Cool School Café rewards, available for commodity reprocessing – USDA 100103

More About This Product

Tyson® Fully Cooked, Whole Grain Breaded, Pancake Flavored Chicken Sausage Bites offer sweet and savory morning tastes in one bite for a fun, easy-to-serve and eat breakfast kids will look forward to before class. Whole grain, lightly sweet, pancake-flavored breading wrapped around bold, high-quality chicken sausage packs 10 grams of protein per serving to get the day started deliciously. Made with no artificial colors or flavors and no preservatives, Tyson® pancake flavored chicken sausage bites provide consistent taste and performance from a brand kids and parents know and trust and you can feel confident serving. Just heat and serve, with no prep hassles BOH—and are consistently sized to meet CN portioning and help reduce waste. Tyson K-12 is committed to serving your mission of meeting the nutritional needs of children across the U.S. and helping you meet the demands of your program. By providing authentic, high-quality products we help you reimagine your school meals through a world of flavors and chef-created recipes that you can rely on.

Ingredients

Dark chicken, water, whole wheat flour, sugar, contains 2% or less of the following: caramelized sugar, corn starch, dextrose, garlic powder, leavening (cream of tartar, sodium bicarbonate), maltodextrin, maple sugar, natural flavors, onion powder, salt, spices, vital wheat gluten, yeast extract, breading set in vegetable oil.

Preparation



Convection

Appliances vary, adjust accordingly. Convection Oven Preheat oven to 350°F. From frozen, place pieces in a single layer on a parchment paper. Heat for 9 - 11 minutes.

Shipping & Storing

Gross Weight	32.53	
Net Weight	30	lb
Cube	1.78	CF
Length	23.5	in
Height	8.38	in
Width	15.63	in
Trailer		5x8
Shelf Life	270 days	
Storage	0°F / 0°F	

Snack'n Waffles

101647 - Snack'n Waffles Buttery Maple 2.4 OZ - 96 Count Case

Buttery Maple Ready to Eat Craft Made Waffle



MARKETING

INDIVIDUALLY WRAPPED. 6G OF PROTEIN. 42% LESS SUGAR THAN WAFFLES WITH SYRUP

PRODUCT SPECIFICATIONS

Code	Dist Prod Code	GTIN	Calculated Pack
09110	101647	10853563000012	96 2.4 OZ

Brand	Brand Owner	GPC Description
Snack'n Waffles	Cokeridge Partners LLC	Biscuits/Cookies (Frozen)

Gross Weight	Net Weight	Case/Catch Weight	Country Of Origin	Kosher	Child Nutrition
15.5 LBR	14.4 LBR	No	United States	Undeclared	No

Shipping

Length	Width	Height	Volume	TlxHl	Shelf Life	Storage Temp From/To
18 INH	12 INH	9.5 INH	2052 INQ	8x8	420 Days	-10 FAH / 0 FAH

ALLERGENS

C = 'Contains'; MC = 'May Contain'; N = 'Free From'; UN = 'Undeclared'; 39 = 'Free From Not Tested'; 60 = 'Derived from Ingredients'; 61 = 'Not Derived from Ingredients'; NI = 'No Info'

- | | |
|------------|----------------|
| Milk - C | Peanuts - N |
| Eggs - C | Tree Nuts - N |
| Soy - N | Fish - N |
| Wheat - C | Shellfish - NI |
| Sesame - N | |

HANDLING SUGGESTIONS

Keep Frozen

SERVING SUGGESTIONS

PREPARATION & COOKING SUGGESTIONS

Nutrition Facts

1 Servings per container

Serving Size 1 Waffle

Amount Per Serving
Calories 250

	% Daily Value*
Total Fat 9 g	14%
Saturated Fat 4 g	20%
Trans Fat 0 g	
Cholesterol 44 mg	15%
Sodium 290 mg	12%
Total Carbohydrates 37 g	12%
Dietary Fiber 2 g	8%
Total Sugars 15 g	
Includes Added Sugars	%
Protein 6 g	

Vitamin D	1%
Calcium	3%
Iron	8%
Potassium	2%

* The % Daily Values (DV) tells you how much a nutrient in a serving of food contributes to a daily diet. 2,000 calories a day is used for general nutrition advice.

INGREDIENTS

Organic Whole Wheat Flour, Organic Enriched Wheat Flour (Organic Wheat Flour, Niacin, Reduced Iron, Thiamine Mononitrate, Riboflavin, Folic Acid), Beet Sugar, Butter, Whole Eggs, Palm Fruit Oil, Canola Oil, Yeast, Non-Fat Milk, Salt, Natural Flavors, Organic Wheat Protein, Distilled Monoglycerides, Enzymes.

MORE INFORMATION

Snack'n Waffles

101647 - Snack'n Waffles Buttery Maple 2.4 OZ - 96 Count Case

Buttery Maple Ready to Eat Craft Made Waffle



NUTRITIONAL ANALYSIS

Calories	250
Protein	6 g
Total Carbohydrates	37 g
Sugars	15 g
Dietary Fiber	2 g
Lactose	
Sucrose	
Vitamin A (IU)	
Vitamin A (RE)	
Vitamin C	
Magnesium	
Monosodium	

Total Fat	9 g
Trans Fat	0 g
Saturated Fat	4 g
Added Sugars	
Polyunsaturated Fat	
Monounsaturated Fat	
Cholesterol	44 mg
Vitamin D	
Vitamin E	
Folate	
Vitamin B-6	
Sulphites	

Sodium	290 mg
Calcium	
Iron	
Potassium	
Zinc	
Phosphorus	
Thiamin	
Niacin	
Riboflavin	
Vitamin B-12	
Nitrates	

NUTRITIONAL CLAIMS

MORE IMAGES



LAND O LAKES® SHREDDED MILD CHEDDAR CHEESE



Product Code: 41749 | SCC: 10034500417492 | UPC:
00034500417495

PRODUCT DESCRIPTION

Land O Lakes® Shredded Cheese boosts the flavor and eye-appeal of countless dishes while cutting down on kitchen prep time.

PRODUCT FEATURES

- Standard shred length and size
- Exceptional melt
- Reliable and consistent performance
- Works well for hot or cold applications
- 1 oz (1/4 cup) provides 1 M/M

SUGGESTED USE

Use as a topping for salads or a filling for enchiladas, hot sandwiches and other entrees.

CASE INFORMATION

Case Pack / Weight: 4/5 lb
Pallet Tie: 17
Pallet High: 4
Total Pallet: 68
Gross Weight: 21.5 lb
Net Weight: 20 lb
Length: 11.813 in
Width: 9.188 in
Height: 14.625 in
Case Cube: 91861 Cu. Ft

SHELF LIFE & STORAGE

Guaranteed Shelf Life: 90 days
Maximum Shelf Life: 150 days
Storage: KEEP REFRIGERATED.

NUTRITIONAL INFORMATION

Serving Size:	1/4 cup (28g; 1 oz)
Serving Per Case:	320
Amount Per Serving	
Calories	110 kcal
*Total Fat 9 g	12 %
Saturated Fat 6 g	30 %
Trans Fat 0 g	
Cholesterol 30 mg	10 %
Sodium 190 mg	8 %
Total Carbohydrate 1 g	0 %
Dietary Fiber 0 g	0 %
Sugars 0 g	
Added Sugars 0 g	0 %
Protein 6 g	12 %
Vitamin D 0 mcg	0 %
Calcium 199 mg	15 %
Iron 0 mg	0 %
Potassium 20 mg	0 %

* The percent daily values are based on a 2,000 calorie diet. Your daily values may be higher or lower depending on your calorie needs.

INGREDIENTS

Cheddar Cheese [cultured pasteurized milk, salt, enzymes, annatto (color)], Anticaking Blend (potato starch, cellulose), Natamycin (natural mold inhibitor). CONTAINS: Milk

Kosher: No

WK 2 - W
WK 4 - F

LAND O LAKES

EXCEPTIONAL VARIETY AND QUALITY

Land O'Lakes offers exceptional variety and quality for your menu so you can feel good about providing great-tasting options to keep your customers coming back for more.

USDA FNS PRODUCT FORMULATION SHEET

EARLY RISERS™ BREADED AND STUFFED HASHBROWN
 SKU: 1000010772
 Pack Size: 6x4 LB



Nutritional Information

Nutrition Facts

about 128 servings per container
Serving size 1 piece (3 oz) (85g)

Amount Per Serving
Calories 220

	% Daily Value*
Total Fat 11g	14%
Saturated Fat 3.5g	10%
Trans Fat 0g	
Cholesterol 70mg	23%
Sodium 480mg	21%
Total Carbohydrate 25g	9%
Dietary Fiber 3g	11%
Total Sugar 3g	
Includes 1g Added Sugars	2%
Protein 7g	
Vitamin D 0.7mcg	4%
Calcium 130mg	10%
Iron 1.1mg	6%
Potassium 140mg	2%

*The % Daily Value (DV) tells you how much a nutrient in a serving of food contributes to a diet of 2,000 calories. © 2014 McCain Foods USA, Inc.

Ingredient and Contains Statement

Ingredients: Water, Whole Wheat Flour, Pasteurized Process Cheese [Cheddar Cheese (Pasteurized Milk, Cheese Cultures, Salt, Enzymes), Water, Sodium Phosphate, Milkfat, Salt, Apocarotenal (color)], Scrambled Eggs (Whole Eggs, Skim Milk, Soybean Oil, Corn Starch, Salt, Xanthan Gum, Citric Acid), Enriched Wheat Flour (Wheat Flour, Niacin, Reduced Iron, Thiamine Mononitrate, Riboflavin, Folic Acid), Potato Shreds [Potatoes, Dextrose, Sodium Acid Pyrophosphate (To Maintain Color)], Vegetable Oil (Soybean And/Or Canola Oil), Yellow Corn Flour. Contains 2% or less of Butter (Cream, Salt), Cellulose Gum, Citric Acid, Dehydrated Garlic, Dehydrated Onion, Dextrose, Disodium Phosphate, Dried Cheddar and Semisoft Cheese (Pasteurized Milk, Cheese Culture, Salt, Enzymes), Garlic Powder, Lactic Acid, Modified Cellulose Gum, Modified Corn Starch, Natural Flavor, Onion Powder, Paprika Extract (color), Salt, Silicon Dioxide (to prevent caking), Spices, Sugar, Whey, Yeast. **CONTAINS: Milk, Egg, Wheat.**

Shelf Life
365 Days

This information is true and correct as of: 02/08/2024

Shannon Racette
 2/8/2024

Shannon Racette - McCain NA Research and Development

General Information

Country of Origin:	USA	"Smart Snack" qualified?	No
Religious Certification(s):	No	"Buy American" qualified?	Yes

Product Formulation Credits

Description of Creditable Ingredients per Food Buying Guide (FBG)	Ounces/ raw portion of creditable ingredient	multiply	FBG yield /servings /unit	Creditable Amount*	
PP Cheddar Cheese	0.5422 oz by Weight	X	16.00/16	0.54220	
Cheese in Cheddar Sauce Mix	0.0196 oz by Weight	X	16.00/16	0.01960	
IQF Pre-Cooked Scrambled Eggs	0.5265 oz by Weight	X	18.00/16	0.59230	
A. Total Creditable Amount				1.15410	
*Creditable amount-multiply ounces per raw portion of creditable ingredient by the FBG yield information.				Round down	1.00

Description of Creditable Ingredients per Food Buying Guide (FBG)	Total Grams divided by number of portions in recipe of creditable ingredient	Divide by	oz eq grains	Creditable Amount*
Whole Wheat Flour	81.33048	16		
Enriched Wheat Flour	32.11488	16		
Total Creditable Amount	113.44536			
Total Creditable Amount 113.44536 / 5 pieces (portions in recipe) = 22.889072 / 16 oz (creditable grains per portion) =				1.418067
Round to nearest 0.25				1.25

***Per FBG, one pocket (85g) provides a 1.00 oz meat alternate serving**
 Product: Cheese (pg. 1-19)
 Product: Eggs, frozen (pg. 1-27)

***Per FBG, one pocket (85g) provides a 1.25oz eq grains**
 22.889g of enriched flour or whole grain per piece

Preparation Instructions

PREPARATION-COOKING INSTRUCTIONS:

- PRODUCT MUST BE FULLY COOKED.
- DO NOT ALLOW PRODUCT TO THAW.

CONVECTION OVEN: PREHEAT OVEN TO 375° F ON HIGH BLOWER. PLACE FROZEN PRODUCT IN A SINGLE LAYER ON A SHEET PAN BEING CAREFUL NOT TO LET PIECES TOUCH AND BAKE FOR 18 MINUTES. LET STAND FOR 1 MINUTE BEFORE SERVING.

NOT DESIGNED FOR MICROWAVE PREPARATION.
CAUTION: PRODUCT WILL BE HOT.

Product Information Sheet



Beef Barbacoa, Salt

Product Code 704-0066

- 100% Beef Cheek Meat with salt
- This item is slow cooked in a steam kettle for hours and then packaged in an easy to heat boil-in-bag

Preparation

Stove Top: Place bag in boiling water for 45-60 minutes or until product reaches 165° F.

Oven: Heat oven to 300° F. Place bag in pan and fully cover with water. Place pan in the oven for 1 hour or until product temperature reaches 165° F.



Packaging

Bag Weight: 5 lbs

Case Weight: 4/5 lbs

Master Case

Net Weight	20.00 LB	Width	13.5"
Cube	.56 FT	Length	18.5"
		Height	3.9"

Pallet Configuration

Ti:	6	Hi:	10
-----	---	-----	----

Ingredients

Beef Cheek Meat, Salt.

Allergens

None

Storage

Shelf Life:	365 Days
Storage Temp:	0 °F (-17.7 °C)
Storage Method:	Frozen
Thawed In-Bag (Sealed) Shelf Life:	20 days

Nutrition Facts

Serving Size .8oz (23g)
Servings Per Container Vary

Amount Per Serving
Calories 70 Calories from Fat 50

% Daily Value*

Total Fat 6g 8%

Saturated Fat 1.5g 8%

Trans Fat 0g

Cholesterol 25mg 8%

Sodium 85mg 4%

Total Carbohydrate 0g 0%

Dietary Fiber 0g 0%

Sugars 0g

Protein 6g

Vitamin A 0% • Vitamin C 0%

Calcium 0% • Iron 4%

*Percent Daily Values are based on a 2,000 calorie diet. Your daily values may be higher or lower depending on your calorie needs:

	Calories: 2,000	2,500
Total Fat	Less than 65g	80g
Saturated Fat	Less than 20g	25g
Cholesterol	Less than 300mg	300mg
Sodium	Less than 2,400mg	2,400mg
Total Carbohydrate	300g	375g
Dietary Fiber	25g	30g

Calories per gram:
Fat 9 • Carbohydrate 4 • Protein 4

Sandwich, Maple Pancake, WG, Chicken Sausage & Cheese, IW (#9126)



A scrumptious breakfast sandwich comprised of chicken sausage and 2 mini maple pancakes and .25oz slice of cheese. This product is served in an ovenable film, just heat and serve! Provides 1.25 protein equivalent and 1 grain equivalent.

General Specifications

Pack: 168/2.75 oz

Kosher: No

Shelf Life: 2 hours at ambient. 4 days refrigerated. 365 days frozen.

Status: Available

SCHOOL SPECIFICATIONS

Nutritional Ratio: 35-10-8

Protein Equivalents: 1.25

OZ Grain Equivalents: 1.0

Whole Grain: 9.98g, 56%

Enriched Flour: 7.8g

Combined Flour 17.78g

INGREDIENTS

Water, Whole Wheat Flour, Enriched Wheat Flour (Wheat Flour, Niacin, Reduced Iron, Thiamine Mononitrate, Riboflavin, Folic Acid), Sugar, Maple Chips (Sugar, Wheat Flour, Soybean Oil, Cellulose Gum, Natural Flavor), Eggs, Buttermilk Solids, Dextrose, Soybean Oil, Whey Powder, Natural Maple Flavor (Water, Propylene Glycol, Natural Flavors), Soy Lecithin, Baking Soda, Salt, Sodium Aluminum Phosphate, Monocalcium Phosphate. Chicken Sausage: Chicken, Water, Seasoning (Salt, Spices, Dextrose, Sugar). American Cheese: Cultured Skim Milk and Milk, Water, Sodium Citrate, Salt, Potassium Citrate, Color (Annatto, Paprika), Cream, Sorbic Acid (preservative), Enzymes, Soy Lecithin (non-sticking agent)

ALLERGENS

Contains egg, milk, soy, and wheat ingredients. This product is produced in a nut-free facility.

Nutrition Facts

Serving size 1 Sandwich (78g)

Amount per serving
Calories 180

% Daily Value*

Total Fat	7g	9%
Saturated Fat	2g	10%
Trans Fat	0g	
Cholesterol	40mg	13%
Sodium	300mg	15%
Total Carbohydrate	18g	6%
Dietary Fiber	1g	4%
Sugars	7g	
Includes 6g Added Sugars		12%
Protein	10g	
Vitamin D		0%
Calcium		8%
Iron		10%
Potassium		2%

* The % Daily Value (DV) tells you how much a nutrient in a serving of food contributes to a daily diet. 2,000 calories a day is used for general nutrition advice.

Sandwich, Maple Pancake, WG, Chicken Sausage & Cheese, IW (#9126)

Instructions

PREPARATION

From frozen - Product is in ovenable film. It is not necessary to remove from film before heating. Heat product at 350 degrees F for 20-22 minutes.

For food safety and quality, product is fully cooked when it reaches an internal temperature of 165F.

Case Specifications

GTIN: 00737410091266

Dimensions: 19.625" x 15.812" x 8.562"

Cube: 1.54

Gross Weight: 30.61 lb

Per Pallet: 48

Tier x Height: 6 x 8

Inside Pack: 168 pieces per case

Bid Specification

Bake Crafters Sandwich, Maple Pancake, WG, Chicken Sausage & Cheese, IW; must be whole grain rich and provide 1.0 ounce grain equivalent and 1.25 ounces of meat or meat alternate. Portion to provide at least 155.0 calories, with no more than 8 grams of fat. Must contain less than 345.0 milligrams of sodium. Acceptable brand: Bake Crafters 9126.



LS

Case Code 26830	Pack & Size 300 / 0.90 OZ. POUCH(ES)
---------------------------	--



Giant Goldfish®Cinnamon Grahams made with whole grain is the perfect product for schools. Each serving is 1 oz grain equivalent and USDA Smart Snacks compliant.

Nutrition Facts	
1 Serving Per Container	
Serving size	1 Pack (26g)
Amount per serving	
Calories	120
	% Daily Value*
Total Fat 4g	5%
Saturated Fat 1g	5%
Trans Fat 0g	
Polyunsaturated Fat 1.5g	
Monounsaturated Fat 1g	
Cholesterol 0mg	0%
Sodium 140mg	6%
Total Carbohydrate 19g	7%
Dietary Fiber 1g	4%
Total Sugars 7g	
Includes 7g Added Sugars	14%
Protein 1g	
Vitamin D 0mcg	0%
Calcium 100mg	8%
Iron 2mg	10%
Potassium 40mg	0%
*The % Daily Value (DV) tells you how much a nutrient in a serving of food contributes to a daily diet. 2,000 calories a day is used for general nutrition advice.	
Nutrition Facts are based on our current data. However, because the data may change from time to time, this information may not always be identical to the Nutrition Facts table found on the labels of products.	

FEATURES AND BENEFITS

- ✓ **VERSATILE GOODNESS:** Goldfish Giant Grahams are perfect to serve as part of school breakfasts, as an a la carte snack, in after school programs, summer camps, and more.
- ✓ **NUTRITION MATTERS:** A delicious wholegrain-rich and wholesome snack kids love, Goldfish Grahams contain 0 grams of trans fat per serving, no artificial flavors or preservatives, and are Smart Snack compliant.
- ✓ **WHOLESUME SNACK:** Each package counts as 1 oz of grain equivalent which provides an excellent way to help fuel students while bringing smiles.
- ✓ **CLASSIC CINNAMON TASTE:** Packed with the sweet flavor of cinnamon everyone loves, students can start the day with whole grain goodness.
- ✓ **THE SNACK THEY LOVE:** Loved by kids of all ages, the delicious taste and instantly recognizable shape of Goldfish Grahams brings a smile to students' faces with every bite.

PREPARATION

HANDLING

Min Product Lifespan from Production: 182 Days.
Minimum Temperature: 55.000 Fahrenheit. Maximum Temperature: 90.000 Fahrenheit.

STORAGE

Shelf Life: 182 Days
Storage Temperature: 55.000 - 90.000 °F

SERVING IDEAS

Perfect for a multitude of snacking occasions or school lunch and breakfast.

INGREDIENTS

MADE WITH SMILES AND WHOLE WHEAT FLOUR, ENRICHED WHEAT FLOUR (FLOUR, NIACIN, REDUCED IRON, THIAMINE MONONITRATE, RIBOFLAVIN, FOLIC ACID), SUGAR, SOYBEAN AND PALM OILS, FRUCTOSE, CONTAINS 2% OR LESS OF: CINNAMON, SALT, CALCIUM CARBONATE, BAKING SODA, CORNSTARCH, FERRIC ORTHOPHOSPHATE, VITAMIN A PALMITATE, CONTAINS: WHEAT.

MORE

For more information on our products, contact your distributor or call 1-800-879-7687.

PACKAGING DETAILS			
Pack & Size:	300 / 0.90 OZ. POUCH(ES)	Case Weight:	21.258 LB
			UPC: 14100268304
Cube:	1.510 FT	Case Size:	23.125 IN x 9.812 IN x 11.500 IN (L x W x H)
		SCC-14:	10014100268304

ALLERGENS

Contains: Gluten, Wheat

DIETARY NEEDS

Sodium 0-140 mgs Per Serving



Product Information Sheet

Product:	A Ready to Drink Strawberry Banana Yogurt Smoothie, that meets the requirements for the Child Nutrition Program
Product Code:	TG5BY48
UPC:	00852333004831
GTIN:	20852333004835
Pack Size:	48/7.6 fl. oz. (225mL) Bottles per Case
Case Net Wt.:	24.87 lbs. (11.28Kg)
Case Dimensions:	13" L x 9.125" W x 12.625" H or 13.25"H x 8.75"W x 11.5"D
Pallet Ti/HI:	15/3 (45 cases)
Storage Conditions:	Store under frozen conditions at or below 0°F
Shelf Life:	24 Months frozen at or below 0° F, 30 days refrigerated
Ingredient Line:	Nonfat Yogurt (Skim Milk, Water, Nonfat Dry Milk, Cultures*), Pear Juice from Concentrate, Allulose, Strawberry Puree from Concentrate, Banana Puree (Bananas, Citric Acid, Ascorbic Acid), Tapioca Starch, Natural Flavors, Pectin, Xanthan Gum, Monk Fruit Extract, Citric Acid, Red Beet Juice Concentrate (color). *Cultures: B. lactis, L. acidophilus, L. bulgaricus, L. lactis, S. thermophilus.

Allergens: Milk

Contains 50% fruit juice with added ingredients

Nutrition Facts	
1 serving per container	
Serving Size 1 bottle	7.6 fl oz (225mL)
Amount per serving	
Calories	130
	% Daily Value
Total Fat 0g	0%
Saturated Fat 0g	0%
Trans Fat 0g	0%
Cholesterol 0mg	0%
Sodium 70mg	3%
Total Carbohydrates 36g	13%
Dietary Fiber <1g	3%
Total Sugars 20g	
Added Sugar 0g	0%
Protein 5g	
Vitamin D 1mcg	5%
Calcium 160mg	12%
Iron <1mg	2%
Potassium 460mg	10%
Vitamin C 10mg	10%
<small>*The % Daily Value (DV) tells you how much a nutrient in a serving size of food contains to a daily diet. 2,000 calories a day is used for general nutrition advice.</small>	

Yoplait Trix Gluten Free Yogurt Single Serve Cup Reduced Sugar Triple Cherry (48 ct) 4 oz

UPC: 70470310770

Information Accurate as of: April 10, 2025

DESCRIPTION

Low fat, kid-friendly Yoplait Trix gluten-free yogurt made with creamy, low fat cherry flavor in a 4 oz single serve cup. Made without gelatin. Made with no colors or flavors from artificial sources and no high fructose corn syrup. For crediting in USDA Child Nutrition Programs: 4 oz serving equals 1 meat/meat alternate, USDA Smart Snacks compliant, and is CACFP eligible.

Case GTIN: 10070470310777

Unit Weight: 4 OZ

Units per case: 48

Nutrition Facts

1 container (113g)
Serving Size

Calories per serving **80**

Amount/serving	% Daily Value**	Amount/serving	% Daily Value**
Total Fat 0g	1%	Sodium 65mg	3%
Saturated Fat 0g	0%	Total Carbohydrate 15g	5%
Trans Fat 0g		Dietary Fiber 0g	0%
Cholesterol 5mg	1%	Total Sugars 9g	0%
		Includes 5g Added Sugars	10%
		Protein 4g	
<hr/>			
Vitamin D 2g	10% •	Calcium 140mg	10% •
Potassium 210mg	4% •	Vitamin A 100g	10% •
Ash 1g	0%	Iron 0mg	0%
		Water 93g	0%

*The % Daily Value (DV) tells you how much a nutrient in a serving of food contributes to a daily diet. 2,000 calories a day is used for general nutrition advice.
* Nutritional information is subject to change. See product label to verify ingredients and allergens.

Nutrition Facts

Calories Approx Per 100g **70**

Amount/100g	% Daily Value**	Amount/100g	% Daily Value**
Total Fat 0g	1%	Sodium 65mg	3%
Saturated Fat 0g	0%	Total Carbohydrate 15g	5%
Trans Fat 0g		Dietary Fiber 0g	0%
Cholesterol 5mg	1%	Total Sugars 9g	0%
		Includes 5g Added Sugars	10%
		Protein 4g	
<hr/>			
Vitamin D 2g	10% •	Calcium 140mg	10% •
Potassium 210mg	4% •	Vitamin A 100g	10% •
Ash 1g	0%	Iron 0mg	0%
		Water 93g	0%

*The % Daily Value (DV) tells you how much a nutrient in a serving of food contributes to a daily diet. 2,000 calories a day is used for general nutrition advice.
* Nutritional information is subject to change. See product label to verify ingredients and allergens.

INGREDIENTS & ALLERGENS: Cultured Grade A Low Fat Milk, Sugar, Modified Corn Starch. Contains 1 % or less of: Corn Starch, Natural Flavor, Fruit And Vegetable Juice (for color), Beta Carotene (for color), Potassium Sorbate Added to Maintain Freshness, Vitamin A Acetate, Vitamin D3.

Contains Milk Ingredients

KOSHER APPROVAL: K D

Nutritional information is subject to change. See product label to verify ingredients and allergens. Do not eat raw dough or batter.
This product profile is correct through the date above. Because product formulations and related product attributes may change, this information is subject to change.
Search results are based on the system information available. Nutritional information is subject to change. See product label on package to verify ingredients and allergens.